

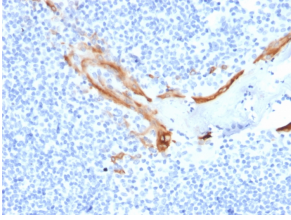
Anti-Cytokeratin 16 Antibody [SPM264] (A249186)

Specifications:

Name:	Anti-Cytokeratin 16 Antibody [SPM264]
Description:	Mouse monoclonal [SPM264] antibody to Cytokeratin 16.
Applications:	Flow Cytometry, IF, WB, IHC
Recommended Dilutions:	Flow Cytometry: 1-2 µg/million cells, IF: 1-2 µg/ml, WB: 1-2 µg/ml, IHC: 1-2 µg/ml
Reactivity:	Human
Immunogen:	Recombinant fragment from the C terminal of human Cytokeratin 16.
Host:	Mouse
Clonality:	Monoclonal
Clone ID:	SPM264
Isotype:	IgG1
Light Chains:	kappa
Conjugate:	Unconjugated
Purification:	Protein A/G chromatography.
Concentration:	200 µg/ml
Product Form:	Liquid
Formulation:	Supplied in 10mM Phosphate Buffered Saline with 0.05% BSA and 0.05% Sodium Azide.
Storage:	Shipped at 4°C. Upon delivery aliquot and store at -20°C. Avoid freeze / thaw cycles.
General Notes:	This monoclonal antibody is also available in a different formulation without BSA and Sodium Azide - Anti-Cytokeratin 16 Antibody [SPM264] - BSA and Azide free (A252366).
Disclaimer:	This product is for research use only. It is not intended for diagnostic or therapeutic use.

Anti-Cytokeratin 16 Antibody [SPM264] (A249186)

Images:



Immunohistochemical analysis of formalin-fixed, paraffin-embedded human tonsil using Anti-Cytokeratin 16 Antibody [SPM264].