

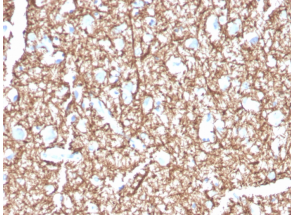
Anti-Myelin Basic Protein Antibody [MBP/4271] (A249281)

Specifications:

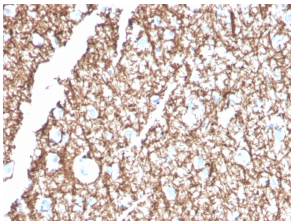
Name:	Anti-Myelin Basic Protein Antibody [MBP/4271]
Description:	Mouse monoclonal [MBP/4271] antibody to Myelin Basic Protein.
Specificity:	This antibody recognizes an epitope located within amino acids 129-138 of MBP.
Applications:	ELISA, ICC, WB, IHC-P
Recommended Dilutions:	ICC: 0.5-1 µg/ml, WB: 1-2 µg/ml, IHC-P: 1-2 µg/ml
Reactivity:	Human, Bovine, Rat
Immunogen:	Human MBP.
Epitope:	a.a. 129-138
Host:	Mouse
Clonality:	Monoclonal
Clone ID:	MBP/4271
Isotype:	IgG2a
Conjugate:	Unconjugated
Purification:	Protein A/G chromatography.
Concentration:	200 µg/ml
Product Form:	Liquid
Formulation:	Supplied in 10mM Phosphate Buffered Saline with 0.05% BSA and 0.05% Sodium Azide.
Storage:	Shipped at 4°C. Upon delivery aliquot and store at -20°C. Avoid freeze / thaw cycles.
General Notes:	This monoclonal antibody is also available in a different formulation without BSA and Sodium Azide - Anti-Myelin Basic Protein Antibody [MBP/4271] - BSA and Azide free (A252461).
Disclaimer:	This product is for research use only. It is not intended for diagnostic or therapeutic use.

Anti-Myelin Basic Protein Antibody [MBP/4271] (A249281)

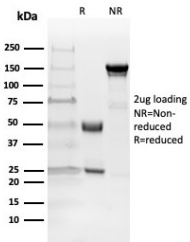
Images:



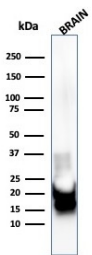
Immunohistochemical analysis of formalin-fixed, paraffin-embedded human brain using Anti-Myelin Basic Protein Antibody [MBP/4271].



Immunohistochemical analysis of formalin-fixed, paraffin-embedded human brain using Anti-Myelin Basic Protein Antibody [MBP/4271].



SDS-PAGE analysis of Anti-Myelin Basic Protein Antibody [MBP/4271] under non-reduced and reduced conditions; showing intact IgG and intact heavy and light chains, respectively. SDS-PAGE analysis confirms the integrity and purity of the antibody.



Western blot analysis of human brain tissue lysate using Anti-Myelin Basic Protein Antibody [MBP/4271].