

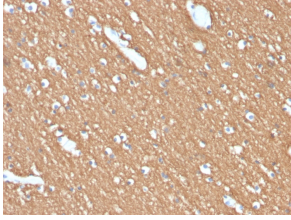
## Anti-Myelin Basic Protein Antibody [MBP/4274] (A249287)

### Specifications:

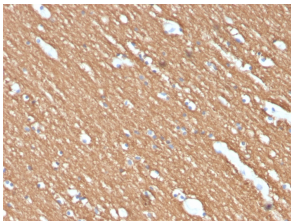
Name:	Anti-Myelin Basic Protein Antibody [MBP/4274]
Description:	Rat monoclonal [MBP/4274] antibody to Myelin Basic Protein.
Specificity:	This antibody recognizes an epitope located within amino acids 36-50 of MBP.
Applications:	ELISA, ICC, WB, IF, IHC-P
Recommended Dilutions:	ICC: 0.5-1 µg/ml, WB: 1-2 µg/ml, IF: 1-2 µg/ml, IHC-P: 1-2 µg/ml
Reactivity:	Human, Bovine, Chicken, Horse
Immunogen:	Human MBP.
Epitope:	a.a. 36-50
Host:	Rat
Clonality:	Monoclonal
Clone ID:	MBP/4274
Isotype:	IgG2b
Conjugate:	Unconjugated
Purification:	Protein A/G chromatography.
Concentration:	200 µg/ml
Product Form:	Liquid
Formulation:	Supplied in 10mM Phosphate Buffered Saline with 0.05% BSA and 0.05% Sodium Azide.
Storage:	Shipped at 4°C. Upon delivery aliquot and store at -20°C. Avoid freeze / thaw cycles.
General Notes:	This monoclonal antibody is also available in a different formulation without BSA and Sodium Azide - Anti-Myelin Basic Protein Antibody [MBP/4274] - BSA and Azide free (A252467).
Disclaimer:	This product is for research use only. It is not intended for diagnostic or therapeutic use.

# Anti-Myelin Basic Protein Antibody [MBP/4274] (A249287)

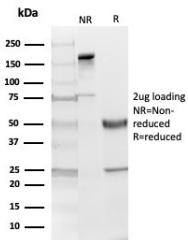
Images:



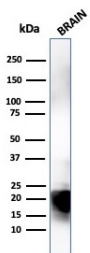
Immunohistochemical analysis of formalin-fixed, paraffin-embedded human brain using Anti-Myelin Basic Protein Antibody [MBP/4274].



Immunohistochemical analysis of formalin-fixed, paraffin-embedded human brain using Anti-Myelin Basic Protein Antibody [MBP/4274].



SDS-PAGE analysis of Anti-Myelin Basic Protein Antibody [MBP/4274] under non-reduced and reduced conditions; showing intact IgG and intact heavy and light chains, respectively. SDS-PAGE analysis confirms the integrity and purity of the antibody.



Western blot analysis of human brain tissue lysate using Anti-Myelin Basic Protein Antibody [MBP/4274].