

## Anti-MCM7 Antibody [rMCM7/1468] (A249305)

### Specifications:

Name:	Anti-MCM7 Antibody [rMCM7/1468]
Description:	Recombinant mouse monoclonal [rMCM7/1468] antibody to MCM7.
Specificity:	The specificity of this monoclonal antibody to its intended target was validated by HuProt™ Array, containing more than 19,000 full-length human proteins. MCM7 is one of the highly conserved mini-chromosome maintenance proteins (MCM) that is essential for the initiation of eukaryotic genome replication. The hexameric protein complex formed by the MCM proteins is a key component of the pre-replication complex and may be involved in the formation of replication forks and in the recruitment of other DNA replication related proteins. The MCM complex consisting of this protein and MCM2, 4 and 6 proteins possesses DNA helicase activity, and may act as a DNA unwinding enzyme. Cyclin D1-dependent kinase, CDK4, is found to associate with this protein, and may regulate the binding of this protein with the tumor suppressor protein RB1/RB.
Applications:	WB, IHC-P
Recommended Dilutions:	WB: 1-2 µg/ml, IHC-P: 1-2 µg/ml
Reactivity:	Human
Immunogen:	Recombinant fragment, around amino acids 195-319, of human MCM7 protein. The exact sequence is proprietary.
Host:	Mouse
Clonality:	Monoclonal
Clone ID:	rMCM7/1468
Isotype:	IgG1
Light Chains:	kappa
Conjugate:	Unconjugated
Purification:	Protein A/G chromatography.
Concentration:	200 µg/ml
Product Form:	Liquid
Formulation:	Supplied in 10mM Phosphate Buffered Saline with 0.05% BSA and 0.05% Sodium Azide.
Storage:	Shipped at 4°C. Upon delivery aliquot and store at -20°C. Avoid freeze / thaw cycles.

## Anti-MCM7 Antibody [rMCM7/1468] (A249305)

### Specifications continued:

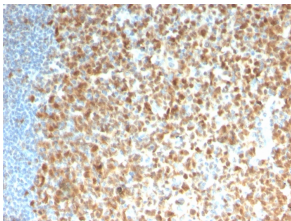
**General Notes:**

This monoclonal antibody is also available in a different formulation without BSA and Sodium Azide - Anti-MCM7 Antibody [rMCM7/1468] - BSA and Azide free (A252485).

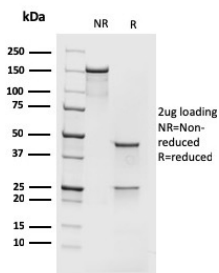
**Disclaimer:**

This product is for research use only. It is not intended for diagnostic or therapeutic use.

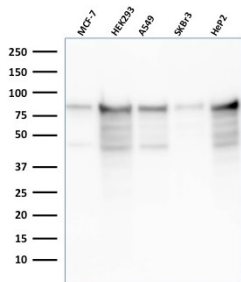
### Images:



Immunohistochemical analysis of formalin-fixed, paraffin-embedded human tonsil using Anti-MCM7 Antibody [rMCM7/1468].



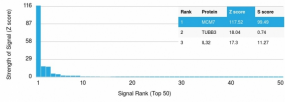
SDS-PAGE analysis of Anti-MCM7 Antibody [rMCM7/1468] under non-reduced and reduced conditions; showing intact IgG and intact heavy and light chains, respectively. SDS-PAGE analysis confirms the integrity and purity of the antibody.



Western blot analysis of MCF-7, HEK-293, A549, SK-BR-3, and HeP2 cell lysates using Anti-MCM7 Antibody [rMCM7/1468].

# Anti-MCM7 Antibody [rMCM7/1468] (A249305)

Images continued:



Analysis of protein array containing more than 19,000 full-length human proteins using Anti-MCM7 Antibody [rMCM7/1468]. Z-Score and S- Score: The Z-score represents the strength of a signal that a monoclonal antibody (MAb) (in combination with a fluorescently-tagged anti-IgG secondary antibody) produces when binding to a particular protein on the HuProt™ array. Z-scores are described in units of standard deviations (SD's) above the mean value of all signals generated on that array. If targets on HuProt™ are arranged in descending order of the Z-score, the S-score is the difference (also in units of SD's) between the Z-score. S-score therefore represents the relative target specificity of a MAb to its intended target; a MAb is considered to be specific to its intended target, if the MAb has an S-score of at least 2.5. For example, if a MAb binds to protein X with a Z-score of 43 and to protein Y with a Z-score of 14, then the S-score for the binding of that MAb to protein X is equal to 29.