

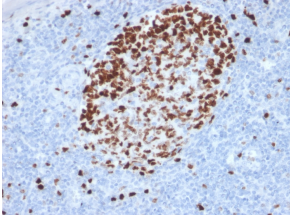
## Anti-Ki67 Antibody [MKI67/2462] (A249345)

### Specifications:

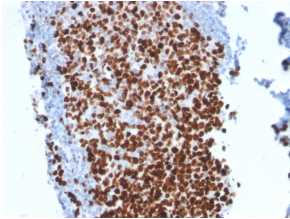
Name:	Anti-Ki67 Antibody [MKI67/2462]
Description:	Mouse monoclonal [MKI67/2462] antibody to Ki67.
Applications:	Flow Cytometry, IF, WB, IHC-P
Recommended Dilutions:	Flow Cytometry: 1-2 µg/million cells, IF: 1-2 µg/ml, WB: 1-2 µg/ml, IHC-P: 1-2 µg/ml
Reactivity:	Human
Immunogen:	Recombinant fragment, around amino acids 2293-2478, of human Ki67 protein. The exact sequence is proprietary.
Host:	Mouse
Clonality:	Monoclonal
Clone ID:	MKI67/2462
Isotype:	IgG2b
Light Chains:	kappa
Conjugate:	Unconjugated
Purification:	Protein A/G chromatography.
Concentration:	200 µg/ml
Product Form:	Liquid
Formulation:	Supplied in 10mM Phosphate Buffered Saline with 0.05% BSA and 0.05% Sodium Azide.
Storage:	Shipped at 4°C. Upon delivery aliquot and store at -20°C. Avoid freeze / thaw cycles.
General Notes:	This monoclonal antibody is also available in a different formulation without BSA and Sodium Azide - Anti-Ki67 Antibody [MKI67/2462] - BSA and Azide free (A252525).
Disclaimer:	This product is for research use only. It is not intended for diagnostic or therapeutic use.

## Anti-Ki67 Antibody [MKI67/2462] (A249345)

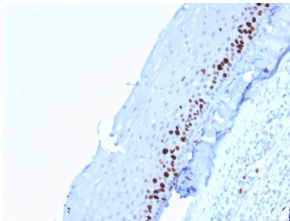
### Images:



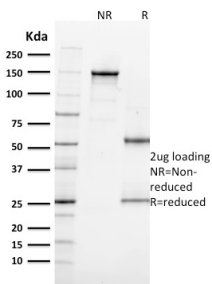
Immunohistochemical analysis of formalin-fixed, paraffin-embedded human tonsil using Anti-Ki67 Antibody [MKI67/2462].



Immunohistochemical analysis of formalin-fixed, paraffin-embedded human tonsil using Anti-Ki67 Antibody [MKI67/2462].



Immunohistochemical analysis of formalin-fixed, paraffin-embedded human tonsil-skin using Anti-Ki67 Antibody [MKI67/2462].



SDS-PAGE analysis of Anti-Ki67 Antibody [MKI67/2462] under non-reduced and reduced conditions; showing intact IgG and intact heavy and light chains, respectively. SDS-PAGE analysis confirms the integrity and purity of the antibody.