

Anti-MUC1 Antibody [MUC1/2818R] (A249415)

Specifications:

Name:	Anti-MUC1 Antibody [MUC1/2818R]
Description:	Recombinant rabbit monoclonal [MUC1/2818R] antibody to MUC1.
Specificity:	This antibody reacts with MUC1. The dominant epitope of This antibody has not yet been determined. MUC1 is a large cell surface mucin glycoprotein expressed by most glandular and ductal epithelial cells and some hematopoietic cell lineages. It is expressed on most secretory epithelium, including mammary gland and some hematopoietic cells. It is expressed abundantly in lactating mammary glands and over expressed abundantly in 90% breast carcinomas and metastases. Transgenic MUC1 has been shown to associate with all four c-erbB receptors and localize with c-erbB1 (EGFR) in lactating glands. The MUC1 gene contains seven exons and produces several different alternatively spliced variants. The major expressed form of MUC1 uses all seven exons and is a type 1 transmembrane protein with a large extracellular tandem repeat domain. The tandem repeat domain is highly O glycosylated and alterations in glycosylation have been shown in epithelial cancer cells. Antibody to EMA is useful as a pan-epithelial marker for detecting early metastatic loci of carcinoma in bone marrow or liver.
Applications:	WB, ELISA, IHC-P
Recommended Dilutions:	WB: 1-2 µg/ml, ELISA: 2-4 µg/ml, IHC-P: 0.25-0.5 µg/ml
Reactivity:	Human, Mouse
Immunogen:	Human milk fat globule membranes.
Host:	Rabbit
Clonality:	Monoclonal
Clone ID:	MUC1/2818R
Isotype:	IgG
Conjugate:	Unconjugated
Purification:	Protein A/G chromatography.
Concentration:	200 µg/ml
Product Form:	Liquid
Formulation:	Supplied in 10mM Phosphate Buffered Saline with 0.05% BSA and 0.05% Sodium Azide.
Storage:	Shipped at 4°C. Upon delivery aliquot and store at -20°C. Avoid freeze / thaw cycles.

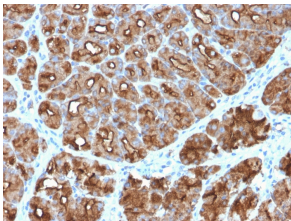
Anti-MUC1 Antibody [MUC1/2818R] (A249415)

Specifications continued:

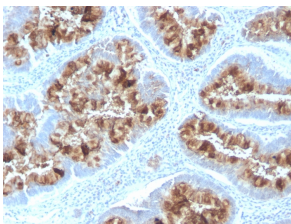
General Notes: This monoclonal antibody is also available in a different formulation without BSA and Sodium Azide - Anti-MUC1 Antibody [MUC1/2818R] - BSA and Azide free (A252595).

Disclaimer: This product is for research use only. It is not intended for diagnostic or therapeutic use.

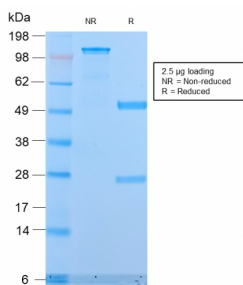
Images:



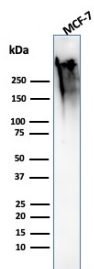
Immunohistochemical analysis of formalin-fixed, paraffin-embedded human stomach carcinoma using Anti-MUC1 Antibody [MUC1/2818R].



Immunohistochemical analysis of formalin-fixed, paraffin-embedded human colon using Anti-MUC1 Antibody [MUC1/2818R].



SDS-PAGE analysis of Anti-MUC1 Antibody [MUC1/2818R] under non-reduced and reduced conditions; showing intact IgG and intact heavy and light chains, respectively. SDS-PAGE analysis confirms the integrity and purity of the antibody.



Western blot analysis of MCF-7 cell lysate using Anti-MUC1 Antibody [MUC1/2818R].