

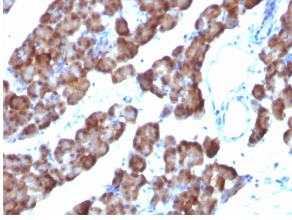
Anti-Ornithine Decarboxylase Antibody [ODC1/485] (A249542)

Specifications:

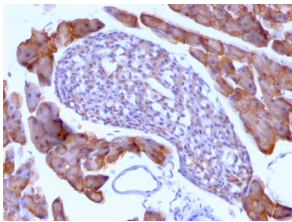
Name:	Anti-Ornithine Decarboxylase Antibody [ODC1/485]
Description:	Mouse monoclonal [ODC1/485] antibody to Ornithine Decarboxylase.
Applications:	WB, Flow Cytometry, IF, IHC-P
Recommended Dilutions:	WB: 0.5-1.0 µg/ml, Flow Cytometry: 1-2 µg/million cells, IF: 1-2 µg/ml, IHC-P: 0.25-0.5 µg/ml
Reactivity:	Human, Mouse, Rat
Immunogen:	Recombinant full-length human ODC-1 protein.
Host:	Mouse
Clonality:	Monoclonal
Clone ID:	ODC1/485
Isotype:	IgG1
Light Chains:	kappa
Conjugate:	Unconjugated
Purification:	Protein A/G chromatography.
Concentration:	200 µg/ml
Product Form:	Liquid
Formulation:	Supplied in 10mM Phosphate Buffered Saline with 0.05% BSA and 0.05% Sodium Azide.
Storage:	Shipped at 4°C. Upon delivery aliquot and store at -20°C. Avoid freeze / thaw cycles.
General Notes:	This monoclonal antibody is also available in a different formulation without BSA and Sodium Azide - Anti-Ornithine Decarboxylase Antibody [ODC1/485] - BSA and Azide free (A252722).
Disclaimer:	This product is for research use only. It is not intended for diagnostic or therapeutic use.

Anti-Ornithine Decarboxylase Antibody [ODC1/485] (A249542)

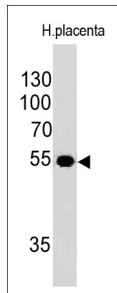
Images:



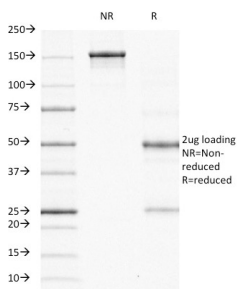
Immunohistochemical analysis of formalin-fixed, paraffin-embedded rat pancreas using Anti-Ornithine Decarboxylase Antibody [ODC1/485].



Immunohistochemical analysis of formalin-fixed, paraffin-embedded mouse pancreas using Anti-Ornithine Decarboxylase Antibody [ODC1/485].



Western blot analysis of human placental lysate using Anti-Ornithine Decarboxylase Antibody [ODC1/485].



SDS-PAGE analysis of Anti-Ornithine Decarboxylase Antibody [ODC1/485] under non-reduced and reduced conditions; showing intact IgG and intact heavy and light chains, respectively. SDS-PAGE analysis confirms the integrity and purity of the antibody.