

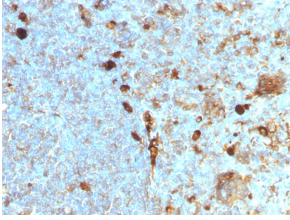
## Anti-alpha 1 Antitrypsin Antibody [AAT/1378] (A249632)

### Specifications:

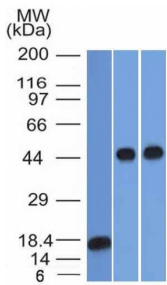
Name:	Anti-alpha 1 Antitrypsin Antibody [AAT/1378]
Description:	Mouse monoclonal [AAT/1378] antibody to alpha 1 Antitrypsin.
Applications:	WB, IHC-P
Recommended Dilutions:	WB: 1-2 µg/ml, IHC-P: 1-2 µg/ml
Reactivity:	Human
Immunogen:	Recombinant fragment of human alpha 1 Antitrypsin protein.
Host:	Mouse
Clonality:	Monoclonal
Clone ID:	AAT/1378
Isotype:	IgG1
Light Chains:	kappa
Conjugate:	Unconjugated
Purification:	Protein A/G chromatography.
Concentration:	200 µg/ml
Product Form:	Liquid
Formulation:	Supplied in 10mM Phosphate Buffered Saline with 0.05% BSA and 0.05% Sodium Azide.
Storage:	Shipped at 4°C. Upon delivery aliquot and store at -20°C. Avoid freeze / thaw cycles.
General Notes:	This monoclonal antibody is also available in a different formulation without BSA and Sodium Azide - Anti-alpha 1 Antitrypsin Antibody [AAT/1378] - BSA and Azide free (A252812).
Disclaimer:	This product is for research use only. It is not intended for diagnostic or therapeutic use.

# Anti-alpha 1 Antitrypsin Antibody [AAT/1378] (A249632)

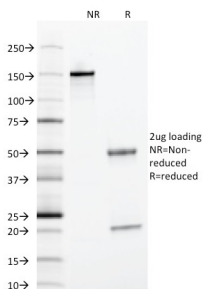
## Images:



Immunohistochemical analysis of formalin-fixed, paraffin-embedded human tonsil using Anti-alpha 1 Antitrypsin Antibody [AAT/1378].



Western blot analysis of (Lane 1) recombinant alpha 1 Antitrypsin, (Lane 2) Jurkat cell lysate, and (Lane 3) A549 cell lysate using Anti-alpha 1 Antitrypsin Antibody [AAT/1378].



SDS-PAGE analysis of Anti-alpha 1 Antitrypsin Antibody [AAT/1378] under non-reduced and reduced conditions; showing intact IgG and intact heavy and light chains, respectively. SDS-PAGE analysis confirms the integrity and purity of the antibody.