

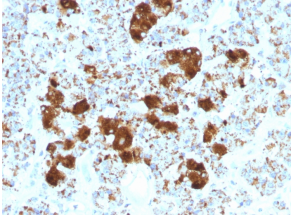
## Anti-ACTH Antibody [SPM501] (A249664)

### Specifications:

Name:	Anti-ACTH Antibody [SPM501]
Description:	Mouse monoclonal [SPM501] antibody to ACTH.
Specificity:	This antibody is specific to CLIP, amino acids 25-39 of ACTH, and it does not react with Synacthen, amino acids 1-24 of ACTH.
Applications:	ELISA, Flow Cytometry, IF, IHC-P
Recommended Dilutions:	Flow Cytometry: 1-2 µg/million cells, IF: 1-2 µg/ml, IHC-P: 1-2 µg/ml
Reactivity:	Human
Immunogen:	Synthetic peptide corresponding to amino acids 25-39 of human ACTH protein.
Sequence:	NGAEDESAEAFPLEF
Host:	Mouse
Clonality:	Monoclonal
Clone ID:	SPM501
Isotype:	IgG1
Light Chains:	kappa
Conjugate:	Unconjugated
Purification:	Protein A/G chromatography.
Concentration:	200 µg/ml
Product Form:	Liquid
Formulation:	Supplied in 10mM Phosphate Buffered Saline with 0.05% BSA and 0.05% Sodium Azide.
Storage:	Shipped at 4°C. Upon delivery aliquot and store at -20°C. Avoid freeze / thaw cycles.
General Notes:	This monoclonal antibody is also available in a different formulation without BSA and Sodium Azide - Anti-ACTH Antibody [SPM501] - BSA and Azide free (A252844).
Disclaimer:	This product is for research use only. It is not intended for diagnostic or therapeutic use.

## Anti-ACTH Antibody [SPM501] (A249664)

Images:



Immunohistochemical analysis of formalin-fixed, paraffin-embedded human pituitary using Anti-ACTH Antibody [SPM501].