

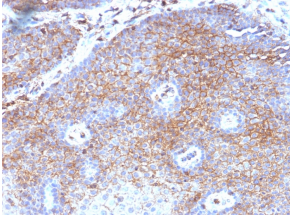
Anti-beta 2 Microglobulin Antibody [B2M/1118] (A249748)

Specifications:

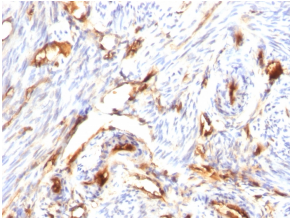
Name:	Anti-beta 2 Microglobulin Antibody [B2M/1118]
Description:	Mouse monoclonal [B2M/1118] antibody to beta 2 Microglobulin.
Applications:	Flow Cytometry, WB, IF, IHC-P
Recommended Dilutions:	Flow Cytometry: 1-2 µg/million cells, WB: 1-2 µg/ml, IF: 1-2 µg/ml, IHC-P: 1-2 µg/ml
Reactivity:	Human, Non-Human Primates
Immunogen:	Recombinant full-length human B2M protein.
Host:	Mouse
Clonality:	Monoclonal
Clone ID:	B2M/1118
Isotype:	IgG1
Light Chains:	kappa
Conjugate:	Unconjugated
Purification:	Protein A/G chromatography.
Concentration:	200 µg/ml
Product Form:	Liquid
Formulation:	Supplied in 10mM Phosphate Buffered Saline with 0.05% BSA and 0.05% Sodium Azide.
Storage:	Shipped at 4°C. Upon delivery aliquot and store at -20°C. Avoid freeze / thaw cycles.
General Notes:	This monoclonal antibody is also available in a different formulation without BSA and Sodium Azide - Anti-beta 2 Microglobulin Antibody [B2M/1118] - BSA and Azide free (A252928).
Disclaimer:	This product is for research use only. It is not intended for diagnostic or therapeutic use.

Anti-beta 2 Microglobulin Antibody [B2M/1118] (A249748)

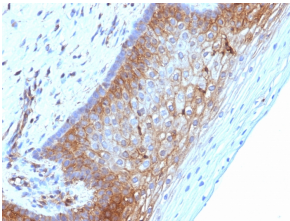
Images:



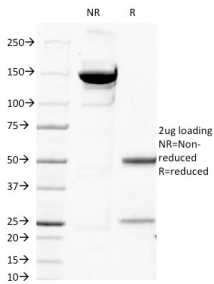
Immunohistochemical analysis of formalin-fixed, paraffin-embedded human cervical carcinoma using Anti-beta 2 Microglobulin Antibody [B2M/1118].



Immunohistochemical analysis of formalin-fixed, paraffin-embedded human endometrial carcinoma using Anti-beta 2 Microglobulin Antibody [B2M/1118].



Immunohistochemical analysis of formalin-fixed, paraffin-embedded human cervical cancer using Anti-beta 2 Microglobulin Antibody [B2M/1118].



SDS-PAGE analysis of Anti-beta 2 Microglobulin Antibody [B2M/1118] under non-reduced and reduced conditions; showing intact IgG and intact heavy and light chains, respectively. SDS-PAGE analysis confirms the integrity and purity of the antibody.