

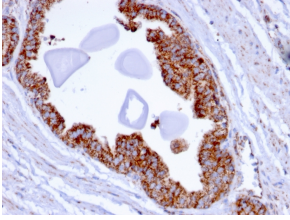
Anti-PMEPA1 Antibody [PMEPA1/2696] (A249756)

Specifications:

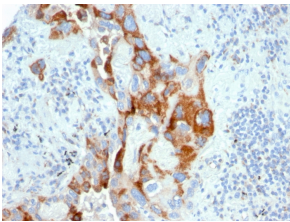
Name:	Anti-PMEPA1 Antibody [PMEPA1/2696]
Description:	Mouse monoclonal [PMEPA1/2696] antibody to PMEPA1.
Applications:	IHC-P
Recommended Dilutions:	IHC-P: 1-2 µg/ml
Reactivity:	Human
Immunogen:	Recombinant full-length human PMEPA1 protein.
Host:	Mouse
Clonality:	Monoclonal
Clone ID:	PMEPA1/2696
Isotype:	IgG1
Light Chains:	kappa
Conjugate:	Unconjugated
Purification:	Protein A/G chromatography.
Concentration:	200 µg/ml
Product Form:	Liquid
Formulation:	Supplied in 10mM Phosphate Buffered Saline with 0.05% BSA and 0.05% Sodium Azide.
Storage:	Shipped at 4°C. Upon delivery aliquot and store at -20°C. Avoid freeze / thaw cycles.
General Notes:	This monoclonal antibody is also available in a different formulation without BSA and Sodium Azide - Anti-PMEPA1 Antibody [PMEPA1/2696] - BSA and Azide free (A252936).
Disclaimer:	This product is for research use only. It is not intended for diagnostic or therapeutic use.

Anti-PMEPA1 Antibody [PMEPA1/2696] (A249756)

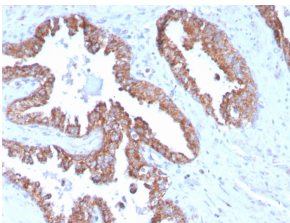
Images:



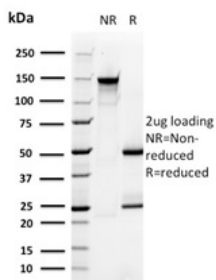
Immunohistochemical analysis of formalin-fixed, paraffin-embedded human prostate carcinoma using Anti-PMEPA1 Antibody [PMEPA1/2696].



Immunohistochemical analysis of formalin-fixed, paraffin-embedded human colon carcinoma using Anti-PMEPA1 Antibody [PMEPA1/2696].



Immunohistochemical analysis of formalin-fixed, paraffin-embedded human prostate carcinoma using Anti-PMEPA1 Antibody [PMEPA1/2696].



SDS-PAGE analysis of Anti-PMEPA1 Antibody [PMEPA1/2696] under non-reduced and reduced conditions; showing intact IgG and intact heavy and light chains, respectively. SDS-PAGE analysis confirms the integrity and purity of the antibody.