

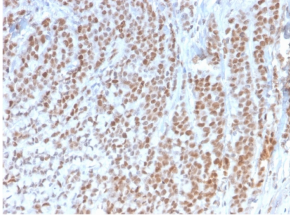
Anti-Rb1 Antibody [1F8] (A249833)

Specifications:

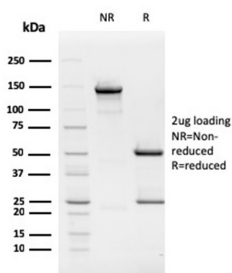
Name:	Anti-Rb1 Antibody [1F8]
Description:	Mouse monoclonal [1F8] antibody to Rb1.
Specificity:	This antibody reacts with the hyper-phosphorylated as well as the un (under) phosphorylated form of the Rb protein. This antibody does not cross-react with p107 or p130. It specifically stains the nuclei of BT-20 cells and primary human foreskin fibroblast (HFF) cells. It does not stain the Rb-negative BT549 cells.
Applications:	WB, IP, IHC-P
Recommended Dilutions:	WB: 1-2 µg/ml, IP: 1-2 µg / 500 µg protein lysate, IHC-P: 1-2 µg/ml
Reactivity:	Human, Mouse
Immunogen:	Recombinant human Rb1 protein fragment of 283 amino acid residues.
Host:	Mouse
Clonality:	Monoclonal
Clone ID:	1F8
Isotype:	IgG1
Light Chains:	kappa
Conjugate:	Unconjugated
Purification:	Protein A/G chromatography.
Concentration:	200 µg/ml
Product Form:	Liquid
Formulation:	Supplied in 10mM Phosphate Buffered Saline with 0.05% BSA and 0.05% Sodium Azide.
Storage:	Shipped at 4°C. Upon delivery aliquot and store at -20°C. Avoid freeze / thaw cycles.
General Notes:	This monoclonal antibody is also available in a different formulation without BSA and Sodium Azide - Anti-Rb1 Antibody [1F8] - BSA and Azide free (A253013).
Disclaimer:	This product is for research use only. It is not intended for diagnostic or therapeutic use.

Anti-Rb1 Antibody [1F8] (A249833)

Images:



Immunohistochemical analysis of formalin-fixed, paraffin-embedded human colon using Anti-Rb1 Antibody [1F8].



SDS-PAGE analysis of Anti-Rb1 Antibody [1F8] under non-reduced and reduced conditions; showing intact IgG and intact heavy and light chains, respectively. SDS-PAGE analysis confirms the integrity and purity of the antibody.