

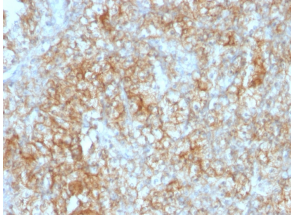
Anti-CD147 Antibody [8D6] (A250069)

Specifications:

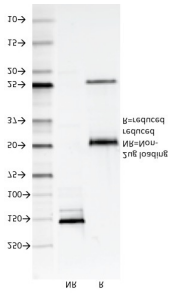
Name:	Anti-CD147 Antibody [8D6]
Description:	Mouse monoclonal [8D6] antibody to CD147.
Specificity:	This antibody recognizes extracellular epitope 2 within the N-terminal Ig domain of human CD147. It is expressed more intensely on thymocytes than on mature peripheral blood T cells. CD147 is important in spermatogenesis, embryo implantation, neural network formation, and tumor progression. It stimulates the production of interstitial collagenase, gelatinase A, stromelysin-1 and various metalloproteinases (MMPs) by fibroblasts. These enzymes are important factors in cancer invasion and metastasis.
Applications:	Flow Cytometry, IF, IHC-P
Recommended Dilutions:	Flow Cytometry: 1-2 µg/million cells, IF: 1:100-1:20, IHC-P: 1-2 µg/ml
Reactivity:	Human
Immunogen:	Human T cell line Molt 13.
Host:	Mouse
Clonality:	Monoclonal
Clone ID:	8D6
Isotype:	IgG1
Light Chains:	kappa
Conjugate:	Unconjugated
Purification:	Protein A/G chromatography.
Concentration:	200 µg/ml
Product Form:	Liquid
Formulation:	Supplied in 10mM Phosphate Buffered Saline with 0.05% BSA and 0.05% Sodium Azide.
Storage:	Shipped at 4°C. Upon delivery aliquot and store at -20°C. Avoid freeze / thaw cycles.
General Notes:	This monoclonal antibody is also available in a different formulation without BSA and Sodium Azide - Anti-CD147 Antibody [8D6] - BSA and Azide free (A253249).
Disclaimer:	This product is for research use only. It is not intended for diagnostic or therapeutic use.

Anti-CD147 Antibody [8D6] (A250069)

Images:



Immunohistochemical analysis of formalin-fixed, paraffin-embedded human renal cell carcinoma using Anti-CD147 Antibody [8D6].



SDS-PAGE analysis of Anti-CD147 Antibody [8D6] under non-reduced and reduced conditions; showing intact IgG and intact heavy and light chains, respectively. SDS-PAGE analysis confirms the integrity and purity of the antibody.