

## Anti-TTF1 Antibody [8G7G3/1] (A250139)

### Specifications:

Name:	Anti-TTF1 Antibody [8G7G3/1]
Description:	Mouse monoclonal [8G7G3/1] antibody to TTF1.
Specificity:	This antibody recognizes a protein of 40kDa, identified as Thyroid transcription factor-1 (TTF-1). TTF-1 is a member of the NKx2 family of homeodomain transcription factors. It is expressed in epithelial cells of the thyroid gland and the lung. Nuclei from liver, stomach, pancreas, small intestine, colon, kidney, breast, skin, testes, pituitary, prostate, and adrenal glands are unreactive. Anti-TTF-1 is useful in differentiating primary adenocarcinoma of the lung from metastatic carcinomas originating in the breast, mediastinal germ cell tumors, and malignant mesothelioma. It can also be used to differentiate small cell lung carcinoma from lymphoid infiltrates. Loss of TTF-1 expression in non-small cell lung carcinoma has been associated with aggressive behavior of such neoplasms. TTF-1 reactivity is also seen in thyroid malignancies.
Applications:	Flow Cytometry, IF, IHC-P
Recommended Dilutions:	Flow Cytometry: 1-2 µg/million cells, IF: 1-2 µg/ml, IHC-P: 1-2 µg/ml
Reactivity:	Human, Mouse, Rat
Immunogen:	Recombinant full-length rat TTF-1 protein.
Host:	Mouse
Clonality:	Monoclonal
Clone ID:	8G7G3/1
Isotype:	IgG1
Light Chains:	kappa
Conjugate:	Unconjugated
Purification:	Protein A/G chromatography.
Concentration:	200 µg/ml
Product Form:	Liquid
Formulation:	Supplied in 10mM Phosphate Buffered Saline with 0.05% BSA and 0.05% Sodium Azide.
Storage:	Shipped at 4°C. Upon delivery aliquot and store at -20°C. Avoid freeze / thaw cycles.
General Notes:	This monoclonal antibody is also available in a different formulation without BSA and Sodium Azide - Anti-TTF1 Antibody [8G7G3/1] - BSA and Azide free (A253319).

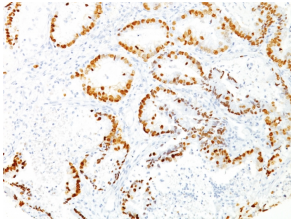
## Anti-TTF1 Antibody [8G7G3/1] (A250139)

### Specifications continued:

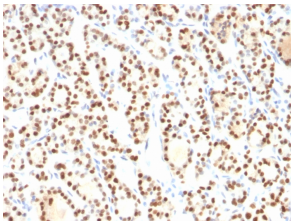
#### Disclaimer:

This product is for research use only. It is not intended for diagnostic or therapeutic use.

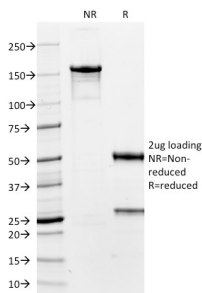
### Images:



Immunohistochemical analysis of formalin-fixed, paraffin-embedded human lung adenocarcinoma using Anti-TTF1 Antibody [8G7G3/1].



Immunohistochemical analysis of formalin-fixed, paraffin-embedded human thyroid using Anti-TTF1 Antibody [8G7G3/1].



SDS-PAGE analysis of Anti-TTF1 Antibody [8G7G3/1] under non-reduced and reduced conditions; showing intact IgG and intact heavy and light chains, respectively. SDS-PAGE analysis confirms the integrity and purity of the antibody.