

Anti-SUMO-1 Antibody [SM1/495] (A250266)

Specifications:

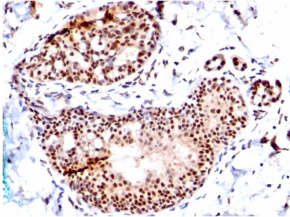
Name:	Anti-SUMO-1 Antibody [SM1/495]
Description:	Mouse monoclonal [SM1/495] antibody to SUMO-1.
Specificity:	This antibody is specific to SUMO-1 and shows no cross-reaction with either SUMO-2 or SUMO-3. The small ubiquitin-related modifier (SUMO) proteins, which include SUMO-1, SUMO-2 and SUMO-3, belong to the ubiquitin-like protein family. Like ubiquitin, the SUMO proteins are synthesized as precursor proteins that undergo processing before conjugation to target proteins. Also, both utilize the E1, E2, and E3 cascade enzymes for conjugation. However, SUMO and ubiquitin differ with respect to targeting. Ubiquitination predominantly targets proteins for degradation, whereas sumoylation targets proteins to a variety of cellular processing, including nuclear transport, transcriptional regulation, apoptosis and protein stability. The unconjugated SUMO-1 protein localizes to the nuclear membrane.
Applications:	Flow Cytometry, IF, WB, IHC-P
Recommended Dilutions:	Flow Cytometry: 1-2 µg/million cells, IF: 1-2 µg/ml, WB: 1-2 µg/ml, IHC-P: 1-2 µg/ml
Reactivity:	Human, Rat
Immunogen:	Recombinant human SUMO1 protein.
Host:	Mouse
Clonality:	Monoclonal
Clone ID:	SM1/495
Isotype:	IgG1
Light Chains:	kappa
Conjugate:	Unconjugated
Purification:	Protein A/G chromatography.
Concentration:	200 µg/ml
Product Form:	Liquid
Formulation:	Supplied in 10mM Phosphate Buffered Saline with 0.05% BSA and 0.05% Sodium Azide.
Storage:	Shipped at 4°C. Upon delivery aliquot and store at -20°C. Avoid freeze / thaw cycles.
General Notes:	This monoclonal antibody is also available in a different formulation without BSA and Sodium Azide - Anti-SUMO-1 Antibody [SM1/495] - BSA and Azide free (A253446).

Anti-SUMO-1 Antibody [SM1/495] (A250266)

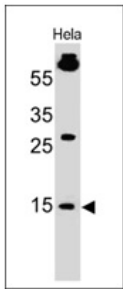
Specifications continued:

Disclaimer: This product is for research use only. It is not intended for diagnostic or therapeutic use.

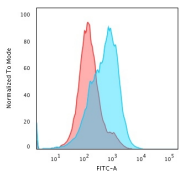
Images:



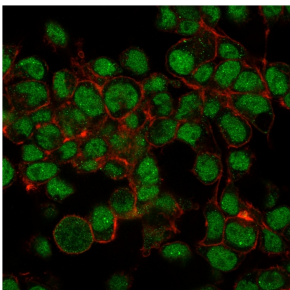
Immunohistochemical analysis of formalin-fixed, paraffin-embedded human breast carcinoma using Anti-SUMO-1 Antibody [SM1/495].



Western blot analysis of HeLa cell lysate using Anti-SUMO-1 Antibody [SM1/495].



Flow cytometric analysis of paraformaldehyde fixed HepG2 cells using Anti-SUMO-1 Antibody [SM1/495] followed by Goat Anti-Mouse IgG (CF® 488) (Blue). Isotype Control (Red).



Immunofluorescent analysis of paraformaldehyde fixed HepG2 cells stained with Anti-SUMO-1 Antibody [SM1/495] followed by Goat Anti-Mouse IgG (CF® 488) (Green). Counterstain is Phalloidin (Red).