

## Anti-PAX8 Antibody [PAX8/1491 + PAX8/1492] (A250362)

### Specifications:

Name:	Anti-PAX8 Antibody [PAX8/1491 + PAX8/1492]
Description:	Mouse monoclonal [PAX8/1491 + PAX8/1492] antibody to PAX8.
Specificity:	This antibody recognizes a protein of 62kDa, identified as PAX8. It is a member of the paired box (PAX) family of transcription factors. This nuclear protein is involved in thyroid follicular cell development and expression of thyroid-specific genes. Mutations in this gene have been associated with thyroid dysgenesis, thyroid follicular carcinomas, and atypical thyroid adenomas. PAX-8 is expressed in the thyroid (and associated carcinomas), non-ciliated mucosal cells of the fallopian tubes, and simple ovarian inclusion cysts, but not normal ovarian surface epithelial cells. PAX-8 is expressed in a high percentage of ovarian serous, endometrioid, and clear cell carcinomas, but only rarely in primary ovarian mucinous adenocarcinomas. PAX-8 expression is reported in renal tubules as well as renal cell carcinoma, nephroblastoma, and seminoma. PAX-8 antibody may be used as an additional immunohistochemical marker for renal epithelial tumors.
Applications:	Flow Cytometry, IF, WB, IHC-P
Recommended Dilutions:	Flow Cytometry: 1-2 µg/million cells, IF: 1-2 µg/ml, WB: 1-2 µg/ml, IHC-P: 1-2 µg/ml
Reactivity:	Human
Immunogen:	Recombinant human PAX8 protein.
Host:	Mouse
Clonality:	Oligoclonal
Clone ID:	PAX8/1491 + PAX8/1492
Isotype:	IgG2a, kappa + IgG2b, kappa
Conjugate:	Unconjugated
Purification:	Protein A/G chromatography.
Concentration:	200 µg/ml
Product Form:	Liquid
Formulation:	Supplied in 10mM Phosphate Buffered Saline with 0.05% BSA and 0.05% Sodium Azide.
Storage:	Shipped at 4°C. Upon delivery aliquot and store at -20°C. Avoid freeze / thaw cycles.

## Anti-PAX8 Antibody [PAX8/1491 + PAX8/1492] (A250362)

### Specifications continued:

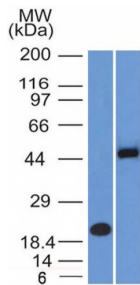
#### General Notes:

Please note, this product is an oligoclonal antibody; it is a cocktail of monoclonal antibodies that have been carefully selected. Oligoclonal antibodies not only have the specificity and batch-to-batch consistency of a monoclonal antibody, but they also have the advantage of the sensitivity of a polyclonal antibody due to their ability to recognize multiple epitopes on an antigen. This oligoclonal antibody is also available in a different formulation without BSA and Sodium Azide - Anti-PAX8 Antibody [PAX8/1491 + PAX8/1492] - BSA and Azide free (A253542).

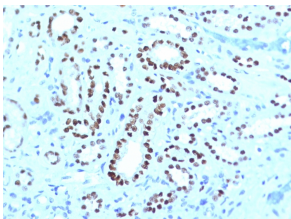
#### Disclaimer:

This product is for research use only. It is not intended for diagnostic or therapeutic use.

### Images:



Western blot analysis of (A) recombinant PAX8 protein and (B) Raji cell lysate using Anti-PAX8 Antibody [PAX8/1491 + PAX8/1492].



Immunohistochemical analysis of formalin-fixed, paraffin-embedded human renal cell carcinoma using Anti-PAX8 Antibody [PAX8/1491 + PAX8/1492].