

## Anti-PAX8 Antibody [PAX8/3688R] (A250366)

### Specifications:

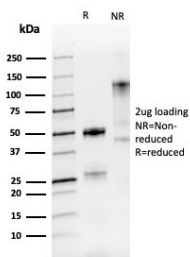
Name:	Anti-PAX8 Antibody [PAX8/3688R]
Description:	Recombinant rabbit monoclonal [PAX8/3688R] antibody to PAX8.
Specificity:	This antibody recognizes a protein of 62kDa, identified as PAX8. It is a member of the paired box (PAX) family of transcription factors. This nuclear protein is involved in thyroid follicular cell development and expression of thyroid-specific genes. Mutations in this gene have been associated with thyroid dysgenesis, thyroid follicular carcinomas, and atypical thyroid adenomas. PAX-8 is expressed in the thyroid (and associated carcinomas), non-ciliated mucosal cells of the fallopian tubes, and simple ovarian inclusion cysts, but not normal ovarian surface epithelial cells. PAX-8 is expressed in a high percentage of ovarian serous, endometrioid, and clear cell carcinomas, but only rarely in primary ovarian mucinous adenocarcinomas. PAX-8 expression is reported in renal tubules as well as renal cell carcinoma, nephroblastoma, and seminoma. PAX-8 antibody may be used as an additional immunohistochemical marker for renal epithelial tumors.
Applications:	IHC-P
Recommended Dilutions:	IHC-P: 1-2 µg/ml
Reactivity:	Human
Immunogen:	Synthetic peptide corresponding to the C terminus of human PAX8 protein.
Host:	Rabbit
Clonality:	Monoclonal
Clone ID:	PAX8/3688R
Isotype:	IgG
Conjugate:	Unconjugated
Purification:	Protein A/G chromatography.
Concentration:	200 µg/ml
Product Form:	Liquid
Formulation:	Supplied in 10mM Phosphate Buffered Saline with 0.05% BSA and 0.05% Sodium Azide.
Storage:	Shipped at 4°C. Upon delivery aliquot and store at -20°C. Avoid freeze / thaw cycles.
General Notes:	This monoclonal antibody is also available in a different formulation without BSA and Sodium Azide - Anti-PAX8 Antibody [PAX8/3688R] - BSA and Azide free (A253546).

## Anti-PAX8 Antibody [PAX8/3688R] (A250366)

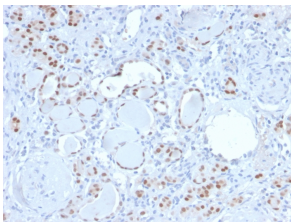
### Specifications continued:

Disclaimer: This product is for research use only. It is not intended for diagnostic or therapeutic use.

### Images:



SDS-PAGE analysis of Anti-PAX8 Antibody [PAX8/3688R] under non-reduced and reduced conditions; showing intact IgG and intact heavy and light chains, respectively. SDS-PAGE analysis confirms the integrity and purity of the antibody.



Immunohistochemical analysis of formalin-fixed, paraffin-embedded human kidney using Anti-PAX8 Antibody [PAX8/3688R].