

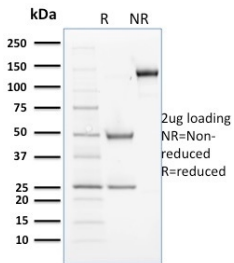
Anti-Cyclin B2 Antibody [X29.2] (A250481)

Specifications:

Name:	Anti-Cyclin B2 Antibody [X29.2]
Description:	Mouse monoclonal [X29.2] antibody to Cyclin B2.
Applications:	ELISA
Reactivity:	Mouse, Rat, Human, Xenopus laevis
Immunogen:	Recombinant full-length Xenopus laevis Cyclin B2 protein.
Host:	Mouse
Clonality:	Monoclonal
Clone ID:	X29.2
Isotype:	IgG1
Light Chains:	kappa
Conjugate:	Unconjugated
Purification:	Protein A/G chromatography.
Concentration:	200 µg/ml
Product Form:	Liquid
Formulation:	Supplied in 10mM Phosphate Buffered Saline with 0.05% BSA and 0.05% Sodium Azide.
Storage:	Shipped at 4°C. Upon delivery aliquot and store at -20°C. Avoid freeze / thaw cycles.
General Notes:	This monoclonal antibody is also available in a different formulation without BSA and Sodium Azide - Anti-Cyclin B2 Antibody [X29.2] - BSA and Azide free (A253661).
Disclaimer:	This product is for research use only. It is not intended for diagnostic or therapeutic use.

Anti-Cyclin B2 Antibody [X29.2] (A250481)

Images:



SDS-PAGE analysis of Anti-Cyclin B2 Antibody [X29.2] under non-reduced and reduced conditions; showing intact IgG and intact heavy and light chains, respectively. SDS-PAGE analysis confirms the integrity and purity of the antibody.