

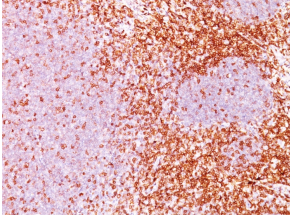
Anti-CD6 Antibody [3F7B5] (A250538)

Specifications:

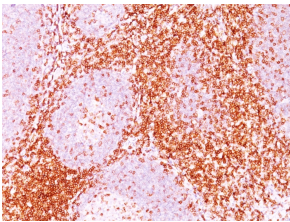
Name:	Anti-CD6 Antibody [3F7B5]
Description:	Mouse monoclonal [3F7B5] antibody to CD6.
Applications:	Flow Cytometry, IF, IHC-P
Recommended Dilutions:	Flow Cytometry: 1-2 µg/million cells, IF: 1-2 µg/ml, IHC-P: 1-2 µg/ml
Reactivity:	Human
Immunogen:	Human rheumatoid synovial T cell line (ST-1).
Host:	Mouse
Clonality:	Monoclonal
Clone ID:	3F7B5
Isotype:	IgG1
Light Chains:	kappa
Conjugate:	Unconjugated
Purification:	Protein A/G chromatography.
Concentration:	200 µg/ml
Product Form:	Liquid
Formulation:	Supplied in 10mM Phosphate Buffered Saline with 0.05% BSA and 0.05% Sodium Azide.
Storage:	Shipped at 4°C. Upon delivery aliquot and store at -20°C. Avoid freeze / thaw cycles.
General Notes:	This monoclonal antibody is also available in a different formulation without BSA and Sodium Azide - Anti-CD6 Antibody [3F7B5] - BSA and Azide free (A253718).
Disclaimer:	This product is for research use only. It is not intended for diagnostic or therapeutic use.

Anti-CD6 Antibody [3F7B5] (A250538)

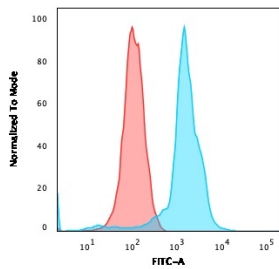
Images:



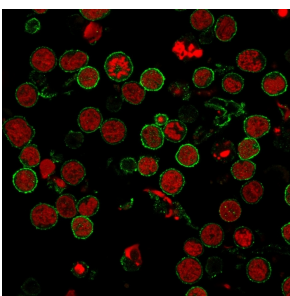
Immunohistochemical analysis of formalin-fixed, paraffin-embedded human tonsil (10X) using Anti-CD6 Antibody [3F7B5].



Immunohistochemical analysis of formalin-fixed, paraffin-embedded human tonsil (20X) using Anti-CD6 Antibody [3F7B5].



Flow cytometric analysis of MOLT4 cells using Anti-CD6 Antibody [3F7B5] followed by Goat Anti-Mouse IgG (CF® 488) (Blue). Isotype Control (Red).



Immunofluorescent analysis of MOLT-4 cells stained with Anti-CD6 Antibody [3F7B5] followed by Goat Anti-Mouse IgG (CF® 488) (Green). Nuclei are stained with RedDot.