

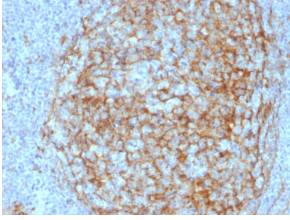
Anti-CD14 Antibody [LPSR/2408] (A250582)

Specifications:

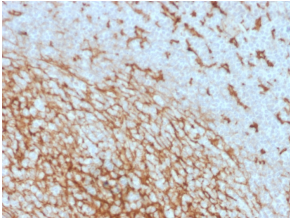
Name:	Anti-CD14 Antibody [LPSR/2408]
Description:	Mouse monoclonal [LPSR/2408] antibody to CD14.
Specificity:	This antibody recognizes a protein of 55kDa, identified as CD14 (also known lipopolysaccharide receptor). CD14 is expressed strongly on monocytes and macrophage and weakly on the surface of neutrophils. CD14 is anchored to cells by linkage to glycosylphosphatidylinositol (GPI) and functions as a high affinity receptor for complexes of LPS and LPS binding protein (LBP). Soluble CD14, also binding to LPS, acts at physiological concentration as an LPS agonist and has, at higher concentrations, an LPS antagonizing effect in cell activation.
Applications:	WB, IHC-P
Recommended Dilutions:	WB: 1-2 µg/ml, IHC-P: 1-2 µg/ml
Reactivity:	Human
Immunogen:	Recombinant fragment, around amino acids 25-148, of human CD14 protein. The exact sequence is proprietary.
Host:	Mouse
Clonality:	Monoclonal
Clone ID:	LPSR/2408
Isotype:	IgG1
Light Chains:	kappa
Conjugate:	Unconjugated
Purification:	Protein A/G chromatography.
Concentration:	200 µg/ml
Product Form:	Liquid
Formulation:	Supplied in 10mM Phosphate Buffered Saline with 0.05% BSA and 0.05% Sodium Azide.
Storage:	Shipped at 4°C. Upon delivery aliquot and store at -20°C. Avoid freeze / thaw cycles.
General Notes:	This monoclonal antibody is also available in a different formulation without BSA and Sodium Azide - Anti-CD14 Antibody [LPSR/2408] - BSA and Azide free (A253762).
Disclaimer:	This product is for research use only. It is not intended for diagnostic or therapeutic use.

Anti-CD14 Antibody [LPSR/2408] (A250582)

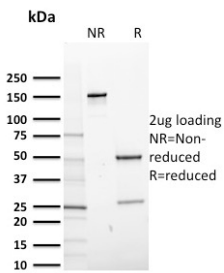
Images:



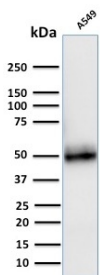
Immunohistochemical analysis of formalin-fixed, paraffin-embedded human lymph node using Anti-CD14 Antibody [LPSR/2408].



Immunohistochemical analysis of formalin-fixed, paraffin-embedded human tonsil using Anti-CD14 Antibody [LPSR/2408].



SDS-PAGE analysis of Anti-CD14 Antibody [LPSR/2408] under non-reduced and reduced conditions; showing intact IgG and intact heavy and light chains, respectively. SDS-PAGE analysis confirms the integrity and purity of the antibody.



Western blot analysis of A549 cell lysate using Anti-CD14 Antibody [LPSR/2408].