

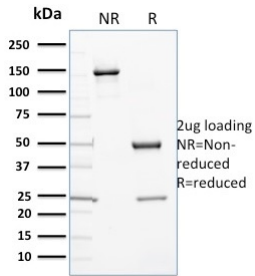
Anti-Cytochrome P450 3A1 Antibody [P6] (A250867)

Specifications:

Name:	Anti-Cytochrome P450 3A1 Antibody [P6]
Description:	Mouse monoclonal [P6] antibody to Cytochrome P450 3A1.
Specificity:	This antibody is highly specific for members of the CYP 3A gene family and cross reacts with CY 3A4 in human, CYP 3A in rat, and potentially CYP 3A11 (based on inducibility) in mice.
Applications:	ELISA, Flow Cytometry, WB
Recommended Dilutions:	Flow Cytometry: 1-2 µg/million cells, WB: 1-2 µg/ml
Reactivity:	Human, Mouse, Rat, Pig
Immunogen:	Native full-length rat liver cytochrome P450 3A1.
Host:	Mouse
Clonality:	Monoclonal
Clone ID:	P6
Isotype:	IgG1
Light Chains:	kappa
Conjugate:	Unconjugated
Purification:	Protein A/G chromatography.
Concentration:	200 µg/ml
Product Form:	Liquid
Formulation:	Supplied in 10mM Phosphate Buffered Saline with 0.05% BSA and 0.05% Sodium Azide.
Storage:	Shipped at 4°C. Upon delivery aliquot and store at -20°C. Avoid freeze / thaw cycles.
General Notes:	This monoclonal antibody is also available in a different formulation without BSA and Sodium Azide - Anti-Cytochrome P450 3A1 Antibody [P6] - BSA and Azide free (A254047).
Disclaimer:	This product is for research use only. It is not intended for diagnostic or therapeutic use.

Anti-Cytochrome P450 3A1 Antibody [P6] (A250867)

Images:



SDS-PAGE analysis of Anti-Cytochrome P450 3A1 Antibody [P6] under non-reduced and reduced conditions; showing intact IgG and intact heavy and light chains, respectively. SDS-PAGE analysis confirms the integrity and purity of the antibody.