

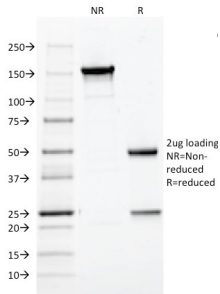
Anti-HPV16 L1 Antibody [CAMVIR-1] (A250881)

Specifications:

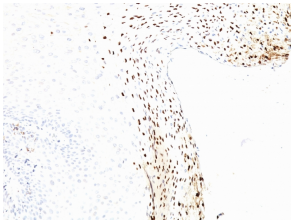
Name:	Anti-HPV16 L1 Antibody [CAMVIR-1]
Description:	Mouse monoclonal [CAMVIR-1] antibody to HPV16 L1.
Specificity:	This antibody reacts very strongly with formalin-fixed, paraffin-embedded tissues containing HPV-16 or HPV-33. Very weak reactions were occasionally observed with biopsy specimens or smears containing HPV-6 or HPV-11. It cross-reacts with HPV-37.
Applications:	IF, IHC-P
Recommended Dilutions:	IF: 1-2 µg/ml, IHC-P: 1-2 µg/ml
Reactivity:	HPV-16
Immunogen:	Human papilloma virus type 16, major capsid protein L1.
Host:	Mouse
Clonality:	Monoclonal
Clone ID:	CAMVIR-1
Isotype:	IgG2a
Light Chains:	kappa
Conjugate:	Unconjugated
Purification:	Protein A/G chromatography.
Concentration:	200 µg/ml
Product Form:	Liquid
Formulation:	Supplied in 10mM Phosphate Buffered Saline with 0.05% BSA and 0.05% Sodium Azide.
Storage:	Shipped at 4°C. Upon delivery aliquot and store at -20°C. Avoid freeze / thaw cycles.
General Notes:	This monoclonal antibody is also available in a different formulation without BSA and Sodium Azide - Anti-HPV16 L1 Antibody [CAMVIR-1] - BSA and Azide free (A254061).
Disclaimer:	This product is for research use only. It is not intended for diagnostic or therapeutic use.

Anti-HPV16 L1 Antibody [CAMVIR-1] (A250881)

Images:



SDS-PAGE analysis of Anti-HPV16 L1 Antibody [CAMVIR-1] under non-reduced and reduced conditions; showing intact IgG and intact heavy and light chains, respectively. SDS-PAGE analysis confirms the integrity and purity of the antibody.



Immunohistochemical analysis of formalin-fixed, paraffin-embedded human cervix using Anti-HPV16 L1 Antibody [CAMVIR-1].