

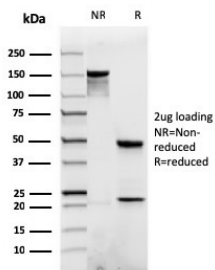
## Anti-beta Catenin Antibody [rCTNNB1/1507] - BSA and Azide free (A251474)

### Specifications:

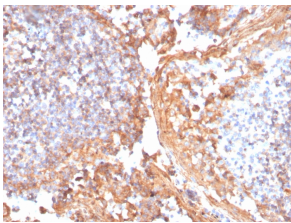
Name:	Anti-beta Catenin Antibody [rCTNNB1/1507] - BSA and Azide free
Description:	Recombinant mouse monoclonal [rCTNNB1/1507] antibody to beta Catenin.
Applications:	Flow Cytometry, ELISA, IHC-P
Recommended Dilutions:	Flow Cytometry: 0.5-1 µg/million cells, IHC-P: 1-2 µg/ml
Reactivity:	Human, Mouse, Rat
Immunogen:	Recombinant fragment of human beta Catenin protein.
Host:	Mouse
Clonality:	Monoclonal
Clone ID:	rCTNNB1/1507
Isotype:	IgG1
Light Chains:	kappa
Conjugate:	Unconjugated
Purification:	Protein A/G chromatography.
Concentration:	1 mg/ml
Product Form:	Liquid
Formulation:	Supplied in 10mM Phosphate Buffered Saline; without Sodium Azide and carrier free.
Storage:	Shipped at 4°C. Upon delivery aliquot and store at -20°C. Avoid freeze / thaw cycles.
General Notes:	This monoclonal antibody is also available in a different formulation with BSA and Sodium Azide - Anti-beta Catenin Antibody [rCTNNB1/1507] (A248292).
Disclaimer:	This product is for research use only. It is not intended for diagnostic or therapeutic use.

## Anti-beta Catenin Antibody [rCTNNB1/1507] - BSA and Azide free (A251474)

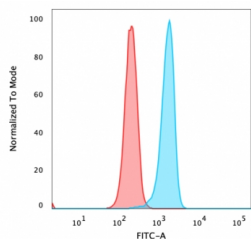
### Images:



SDS-PAGE analysis of Anti-beta Catenin Antibody [rCTNNB1/1507] under non-reduced and reduced conditions; showing intact IgG and intact heavy and light chains, respectively. SDS-PAGE analysis confirms the integrity and purity of the antibody.



Immunohistochemical analysis of formalin-fixed, paraffin-embedded human tonsil using Anti-beta Catenin Antibody [rCTNNB1/1507].



Flow cytometric analysis of PFA fixed HeLa cells using Anti-beta Catenin Antibody [rCTNNB1/1507] followed by Goat Anti-Mouse IgG (CF® 488) (Blue). Isotype Control (Red).