

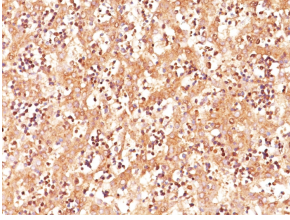
Anti-alpha Fetoprotein Antibody [C3] - BSA and Azide free (A251517)

Specifications:

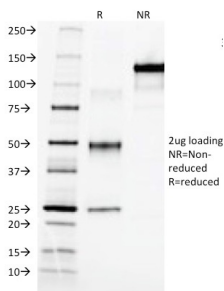
Name:	Anti-alpha Fetoprotein Antibody [C3] - BSA and Azide free
Description:	Mouse monoclonal [C3] antibody to alpha Fetoprotein.
Specificity:	This antibody is highly specific to AFP and shows no cross-reaction with other oncofetal antigens or serum albumin.
Applications:	IHC-P
Recommended Dilutions:	IHC-P: 1-2 µg/ml
Reactivity:	Human, Monkey, Canine, Porcine
Cross Reactivity:	This antibody does not cross react with Bovine, Mouse, or Rat.
Immunogen:	Native alpha Fetoprotein purified from serum of a hepatoma patient.
Host:	Mouse
Clonality:	Monoclonal
Clone ID:	C3
Isotype:	IgG2a
Light Chains:	kappa
Conjugate:	Unconjugated
Purification:	Protein A/G chromatography.
Concentration:	1 mg/ml
Product Form:	Liquid
Formulation:	Supplied in 10mM Phosphate Buffered Saline; without Sodium Azide and carrier free.
Storage:	Shipped at 4°C. Upon delivery aliquot and store at -20°C. Avoid freeze / thaw cycles.
General Notes:	This monoclonal antibody is also available in a different formulation with BSA and Sodium Azide - Anti-alpha Fetoprotein Antibody [C3] (A248335).
Disclaimer:	This product is for research use only. It is not intended for diagnostic or therapeutic use.

Anti-alpha Fetoprotein Antibody [C3] - BSA and Azide free (A251517)

Images:



Immunohistochemical analysis of formalin-fixed, paraffin-embedded human fetal liver using Anti-alpha Fetoprotein Antibody [C3].



SDS-PAGE analysis of Anti-alpha Fetoprotein Antibody [C3] under non-reduced and reduced conditions; showing intact IgG and intact heavy and light chains, respectively. SDS-PAGE analysis confirms the integrity and purity of the antibody.