

# Anti-Thymidine Phosphorylase Antibody [rTYMP/3444] - BSA and Azide free (A251566)

## Specifications:

Name:	Anti-Thymidine Phosphorylase Antibody [rTYMP/3444] - BSA and Azide free
Description:	Recombinant mouse monoclonal [rTYMP/3444] antibody to Thymidine Phosphorylase.
Specificity:	This antibody recognizes a protein (amino acid 482) of 55kDa (in vivo 110kDa homodimer), identified as platelet-derived endothelial growth factor (PD-ECGF), same as thymidine phosphorylase (TP) or gliostatin. In the presence of inorganic orthophosphate, it catalyzes the reversible phospholytic cleavage of thymidine and deoxyuridine to their corresponding bases and 2-deoxyribose-1-phosphate. It is both chemotactic and mitogenic for endothelial cells and a non-heparin binding angiogenic factor present in platelets. Its enzymatic activity is crucial for angiogenic activity (metabolite is angiogenic). Higher levels of serum TP/PD-ECGF are observed in cancer patients. It is also involved in transformation of fluoropyrimidines, cytotoxic agents used in the treatment of a variety of malignancies, into active cytotoxic metabolites (e.g. 5-deoxy-5-fluorouridine to 5-FU). High intra-cellular levels of TP/PD-ECGF are associated with increased chemosensitivity to such antimetabolites.
Applications:	IHC-P
Recommended Dilutions:	IHC-P: 1-2 µg/ml
Reactivity:	Human, Mouse, Rat
Immunogen:	Recombinant full-length human Thymidine Phosphorylase protein.
Host:	Mouse
Clonality:	Monoclonal
Clone ID:	rTYMP/3444
Isotype:	IgG1
Light Chains:	kappa
Conjugate:	Unconjugated
Purification:	Protein A/G chromatography.
Concentration:	1 mg/ml
Product Form:	Liquid
Formulation:	Supplied in 10mM Phosphate Buffered Saline; without Sodium Azide and carrier free.
Storage:	Shipped at 4°C. Upon delivery aliquot and store at -20°C. Avoid freeze / thaw cycles.

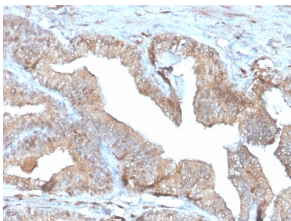
# Anti-Thymidine Phosphorylase Antibody [rTYMP/3444] - BSA and Azide free (A251566)

## Specifications continued:

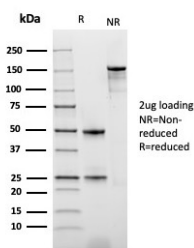
**General Notes:** This monoclonal antibody is also available in a different formulation with BSA and Sodium Azide - Anti-Thymidine Phosphorylase Antibody [rTYMP/3444] (A248384).

**Disclaimer:** This product is for research use only. It is not intended for diagnostic or therapeutic use.

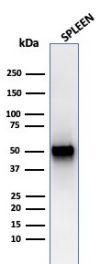
## Images:



Immunohistochemical analysis of formalin-fixed, paraffin-embedded human placenta using Anti-Thymidine Phosphorylase Antibody [rTYMP/3444].



SDS-PAGE analysis of Anti-Thymidine Phosphorylase Antibody [rTYMP/3444] under non-reduced and reduced conditions; showing intact IgG and intact heavy and light chains, respectively. SDS-PAGE analysis confirms the integrity and purity of the antibody.



Western blot analysis of human spleen tissue lysate using Anti-Thymidine Phosphorylase Antibody [rTYMP/3444].