

Anti-Neuron Specific Enolase Antibody [ENO2/1375] - BSA and Azide free (A251616)

Specifications:

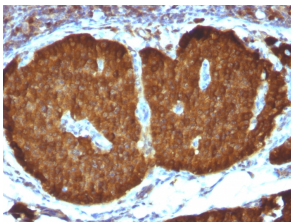
Name:	Anti-Neuron Specific Enolase Antibody [ENO2/1375] - BSA and Azide free
Description:	Mouse monoclonal [ENO2/1375] antibody to Neuron Specific Enolase.
Specificity:	This antibody recognizes a protein of about 50kDa, which is identified as gamma-enolase. Three isoenzymes of enolases are identified, alpha, beta and gamma. Alpha-isoform is expressed in most tissues, whereas beta-form is expressed predominantly in muscle tissue whereas gamma-enolase is found only in nervous tissue. These isoforms exist as both homodimers and heterodimers, and they play a role in converting phosphoglyceric acid to phosphoenolpyruvic acid in the glycolytic pathway. NSE-gamma is a useful marker to identify peripheral nerves and tumors of neuro-endocrine origins, such as pheochromocytomas. It is usually employed in combination with other markers such as Synaptophysin, Chromogranin A, and Neurofilament.
Applications:	WB, IHC-P
Recommended Dilutions:	WB: 1-2 µg/ml, IHC-P: 0.2-0.4 µg/ml
Reactivity:	Human, Mouse, Rat
Immunogen:	Synthetic peptide, within amino acids 416-433, of human NSE gamma. The exact sequence is proprietary.
Host:	Mouse
Clonality:	Monoclonal
Clone ID:	ENO2/1375
Isotype:	IgG2b
Light Chains:	kappa
Conjugate:	Unconjugated
Purification:	Protein A/G chromatography.
Concentration:	1 mg/ml
Product Form:	Liquid
Formulation:	Supplied in 10mM Phosphate Buffered Saline; without Sodium Azide and carrier free.
Storage:	Shipped at 4°C. Upon delivery aliquot and store at -20°C. Avoid freeze / thaw cycles.
General Notes:	This monoclonal antibody is also available in a different formulation with BSA and Sodium Azide - Anti-Neuron Specific Enolase Antibody [ENO2/1375] (A248434).

Anti-Neuron Specific Enolase Antibody [ENO2/1375] - BSA and Azide free (A251616)

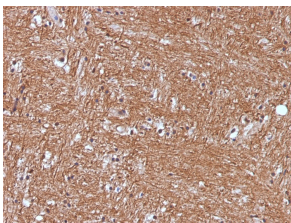
Specifications continued:

Disclaimer: This product is for research use only. It is not intended for diagnostic or therapeutic use.

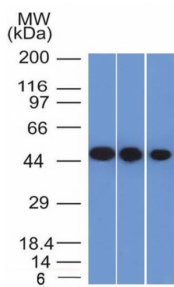
Images:



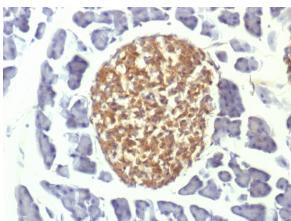
Immunohistochemical analysis of formalin-fixed, paraffin-embedded human pheochromocytoma using Anti-Neuron Specific Enolase Antibody [ENO2/1375].



Immunohistochemical analysis of formalin-fixed, paraffin-embedded human cerebellum using Anti-Neuron Specific Enolase Antibody [ENO2/1375].



Western blot analysis of Y79, HeLa, and HepG2 cell lysates using Anti-Neuron Specific Enolase Antibody [ENO2/1375].



Immunohistochemical analysis of formalin-fixed, paraffin-embedded mouse pancreas using Anti-Neuron Specific Enolase Antibody [ENO2/1375].