

Anti-Neuron Specific Enolase Antibody [SPM347] - BSA and Azide free (A251617)

Specifications:

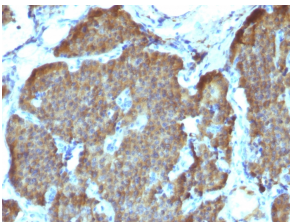
Name:	Anti-Neuron Specific Enolase Antibody [SPM347] - BSA and Azide free
Description:	Mouse monoclonal [SPM347] antibody to Neuron Specific Enolase.
Specificity:	This antibody recognizes a protein of about 50kDa, which is identified as gamma-enolase. Three isoenzymes of enolases are identified, alpha, beta and gamma. Alpha-isoform is expressed in most tissues, whereas beta-form is expressed predominantly in muscle tissue whereas gamma-enolase is found only in nervous tissue. These isoforms exist as both homodimers and heterodimers, and they play a role in converting phosphoglyceric acid to phosphoenolpyruvic acid in the glycolytic pathway. NSE-gamma is a useful marker to identify peripheral nerves and tumors of neuro-endocrine origins, such as pheochromocytomas. It is usually employed in combination with other markers such as Synaptophysin, Chromogranin A, and Neurofilament.
Applications:	Flow Cytometry, IF, WB, IHC-P
Recommended Dilutions:	Flow Cytometry: 1-2 µg/million cells, IF: 1-2 µg/ml, WB: 1-2 µg/ml, IHC-P: 1-2 µg/ml
Reactivity:	Human
Immunogen:	Synthetic peptide, within amino acids 416-433, of human NSE gamma. The exact sequence is proprietary.
Host:	Mouse
Clonality:	Monoclonal
Clone ID:	SPM347
Isotype:	IgG2b
Light Chains:	kappa
Conjugate:	Unconjugated
Purification:	Protein A/G chromatography.
Concentration:	1 mg/ml
Product Form:	Liquid
Formulation:	Supplied in 10mM Phosphate Buffered Saline; without Sodium Azide and carrier free.
Storage:	Shipped at 4°C. Upon delivery aliquot and store at -20°C. Avoid freeze / thaw cycles.
General Notes:	This monoclonal antibody is also available in a different formulation with BSA and Sodium Azide - Anti-Neuron Specific Enolase Antibody [SPM347] (A248435).

Anti-Neuron Specific Enolase Antibody [SPM347] - BSA and Azide free (A251617)

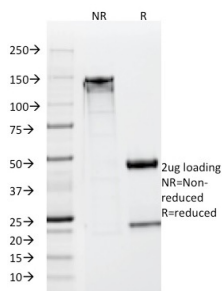
Specifications continued:

Disclaimer: This product is for research use only. It is not intended for diagnostic or therapeutic use.

Images:



Immunohistochemical analysis of formalin-fixed, paraffin-embedded human pheochromocytoma using Anti-Neuron Specific Enolase Antibody [SPM347].



SDS-PAGE analysis of Anti-Neuron Specific Enolase Antibody [SPM347] under non-reduced and reduced conditions; showing intact IgG and intact heavy and light chains, respectively. SDS-PAGE analysis confirms the integrity and purity of the antibody.