

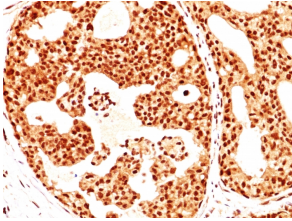
# Anti-Estrogen Receptor beta 1 Antibody [ERb455] - BSA and Azide free (A251672)

## Specifications:

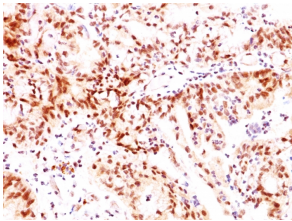
Name:	Anti-Estrogen Receptor beta 1 Antibody [ERb455] - BSA and Azide free
Description:	Mouse monoclonal [ERb455] antibody to Estrogen Receptor beta 1.
Applications:	Flow Cytometry, IF, WB, IHC-P
Recommended Dilutions:	Flow Cytometry: 1-2 µg/million cells, IF: 1-2 µg/ml, WB: 1-2 µg/ml, IHC-P: 1-2 µg/ml
Reactivity:	Human, Monkey, Mouse, Rat, Porcine, Horse, Sheep
Immunogen:	C-terminal fragment of recombinant human Estrogen Receptor beta protein.
Host:	Mouse
Clonality:	Monoclonal
Clone ID:	ERb455
Isotype:	IgG2a
Light Chains:	kappa
Conjugate:	Unconjugated
Purification:	Protein A/G chromatography.
Concentration:	1 mg/ml
Product Form:	Liquid
Formulation:	Supplied in 10mM Phosphate Buffered Saline; without Sodium Azide and carrier free.
Storage:	Shipped at 4°C. Upon delivery aliquot and store at -20°C. Avoid freeze / thaw cycles.
General Notes:	This monoclonal antibody is also available in a different formulation with BSA and Sodium Azide - Anti-Estrogen Receptor beta 1 Antibody [ERb455] (A248490).
Disclaimer:	This product is for research use only. It is not intended for diagnostic or therapeutic use.

## Anti-Estrogen Receptor beta 1 Antibody [ERb455] - BSA and Azide free (A251672)

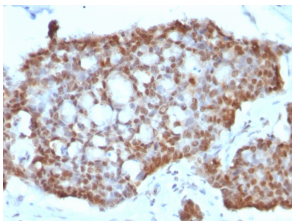
### Images:



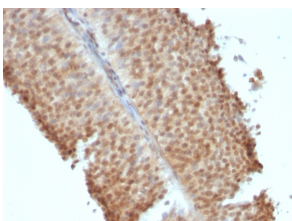
Immunohistochemical analysis of formalin-fixed, paraffin-embedded human breast carcinoma using Anti-Estrogen Receptor beta 1 Antibody [ERb455].



Immunohistochemical analysis of formalin-fixed, paraffin-embedded human ovarian carcinoma using Anti-Estrogen Receptor beta 1 Antibody [ERb455].



Immunohistochemical analysis of formalin-fixed, paraffin-embedded human gastric carcinoma using Anti-Estrogen Receptor beta 1 Antibody [ERb455].



Immunohistochemical analysis of formalin-fixed, paraffin-embedded human bladder carcinoma using Anti-Estrogen Receptor beta 1 Antibody [ERb455].