

Anti-FLI1 Antibody [FLI1/1312] - BSA and Azide free (A251732)

Specifications:

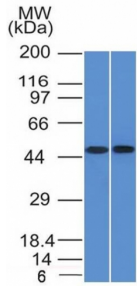
Name:	Anti-FLI1 Antibody [FLI1/1312] - BSA and Azide free
Description:	Mouse monoclonal [FLI1/1312] antibody to FLI1.
Specificity:	This antibody recognizes a protein of 51kDa, which is identified as FLI1. This protein, a member of the ETS family of DNA binding transcription factors, is involved in cellular proliferation and tumorigenesis. Ets-1 is the prototype member of a family of genes identified on the basis of homology to the v-Ets oncogene isolated from the E26 erythroblastosis virus. Members of the Ets gene family share a highly conserved carboxy-terminal domain containing a sequence related to the SV40 large T antigen nuclear localization signal sequence. Approximately 90% of Ewings Sarcomas. High sensitivity and specificity of Fli-1 equals to or exceeds that of the established vascular markers like CD31, CD34, and Factor VIII.
Applications:	Flow Cytometry, IF, WB
Recommended Dilutions:	Flow Cytometry: 1-2 µg/million cells, IF: 1-2 µg/ml, WB: 1-2 µg/ml
Reactivity:	Human
Immunogen:	Recombinant fragment, around amino acids 107-261, of human FLI1 protein with hexa-histidine tag.
Host:	Mouse
Clonality:	Monoclonal
Clone ID:	FLI1/1312
Isotype:	IgG1
Light Chains:	kappa
Conjugate:	Unconjugated
Purification:	Protein A chromatography.
Concentration:	1 mg/ml
Product Form:	Liquid
Formulation:	Supplied in 10mM Phosphate Buffered Saline; without Sodium Azide and carrier free.
Storage:	Shipped at 4°C. Upon delivery aliquot and store at -20°C. Avoid freeze / thaw cycles.
General Notes:	This monoclonal antibody is also available in a different formulation with BSA and Sodium Azide - Anti-FLI1 Antibody [FLI1/1312] (A248550).

Anti-FLI1 Antibody [FLI1/1312] - BSA and Azide free (A251732)

Specifications continued:

Disclaimer: This product is for research use only. It is not intended for diagnostic or therapeutic use.

Images:



Western blot analysis of THP-1 and Raji Cell lysates using Anti-FLI1 Antibody [FLI1/1312].