

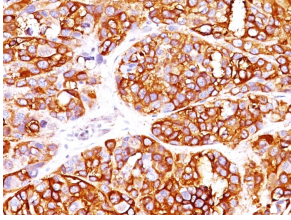
## Anti-MelanA Antibody [MLANA/1409R] - BSA and Azide free (A251749)

### Specifications:

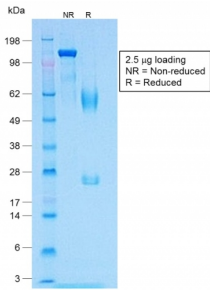
Name:	Anti-MelanA Antibody [MLANA/1409R] - BSA and Azide free
Description:	Recombinant rabbit monoclonal [MLANA/1409R] antibody to MelanA.
Specificity:	This antibody recognizes a protein doublet of 20-22kDa, identified as MART-1 (Melanoma Antigen Recognized by T cells 1) or Melan-A. MART-1 is a newly identified melanocyte differentiation antigen recognized by autologous cytotoxic T lymphocytes. Seven other melanoma associated antigens recognized by autologous cytotoxic T cells include MAGE-1, MAGE-3, tyrosinase, gp100, gp75, BAGE-1, and GAGE-1. Subcellular fractionation shows that MART-1 is present in melanosomes and endoplasmic reticulum. This MAb labels melanomas and other tumors showing melanocytic differentiation. It is also a useful positive-marker for angiomyolipomas. It does not stain tumor cells of epithelial, lymphoid, glial, or mesenchymal origin.
Applications:	WB, IHC-P
Recommended Dilutions:	WB: 2-4 µg/ml, IHC-P: 1-2 µg/ml
Reactivity:	Human, Mouse, Rat, Canine
Immunogen:	Recombinant full-length human MART-1 protein.
Host:	Rabbit
Clonality:	Monoclonal
Clone ID:	MLANA/1409R
Isotype:	IgG
Conjugate:	Unconjugated
Purification:	Protein A/G chromatography.
Concentration:	1 mg/ml
Product Form:	Liquid
Formulation:	Supplied in 10mM Phosphate Buffered Saline; without Sodium Azide and carrier free.
Storage:	Shipped at 4°C. Upon delivery aliquot and store at -20°C. Avoid freeze / thaw cycles.
General Notes:	This monoclonal antibody is also available in a different formulation with BSA and Sodium Azide - Anti-MelanA Antibody [MLANA/1409R] (A248567).
Disclaimer:	This product is for research use only. It is not intended for diagnostic or therapeutic use.

# Anti-MelanA Antibody [MLANA/1409R] - BSA and Azide free (A251749)

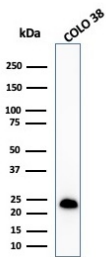
Images:



Immunohistochemical analysis of formalin-fixed, paraffin-embedded human melanoma using Anti-MelanA Antibody [MLANA/1409R].



SDS-PAGE analysis of Anti-MelanA Antibody [MLANA/1409R] under non-reduced and reduced conditions; showing intact IgG and intact heavy and light chains, respectively. SDS-PAGE analysis confirms the integrity and purity of the antibody.



Western blot analysis of COLO-38 cell lysate using Anti-MelanA Antibody [MLANA/1409R].