

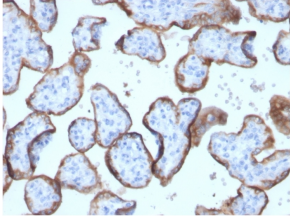
Anti-Placental Alkaline Phosphatase Antibody [ALPP/2899R] - BSA and Azide free (A251827)

Specifications:

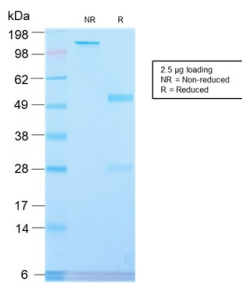
Name:	Anti-Placental Alkaline Phosphatase Antibody [ALPP/2899R] - BSA and Azide free
Description:	Recombinant rabbit monoclonal [ALPP/2899R] antibody to Placental Alkaline Phosphatase.
Specificity:	This antibody is highly specific for PLAP and shows no cross-reaction with other isozymes of alkaline phosphatase.
Applications:	WB, IHC-P
Recommended Dilutions:	WB: 1-2 µg/ml, IHC-P: 0.25-0.5 µg/ml
Reactivity:	Human
Immunogen:	Recombinant full-length human ALPP protein.
Host:	Rabbit
Clonality:	Monoclonal
Clone ID:	ALPP/2899R
Isotype:	IgG
Conjugate:	Unconjugated
Purification:	Protein A/G chromatography.
Concentration:	1 mg/ml
Product Form:	Liquid
Formulation:	Supplied in 10mM Phosphate Buffered Saline; without Sodium Azide and carrier free.
Storage:	Shipped at 4°C. Upon delivery aliquot and store at -20°C. Avoid freeze / thaw cycles.
General Notes:	This monoclonal antibody is also available in a different formulation with BSA and Sodium Azide - Anti-Placental Alkaline Phosphatase Antibody [ALPP/2899R] (A248645).
Disclaimer:	This product is for research use only. It is not intended for diagnostic or therapeutic use.

Anti-Placental Alkaline Phosphatase Antibody [ALPP/2899R] - BSA and Azide free (A251827)

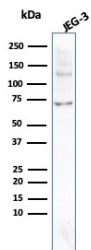
Images:



Immunohistochemical analysis of formalin-fixed, paraffin-embedded human placenta using Anti-Placental Alkaline Phosphatase Antibody [ALPP/2899R].



SDS-PAGE analysis of Anti-Placental Alkaline Phosphatase Antibody [ALPP/2899R] under non-reduced and reduced conditions; showing intact IgG and intact heavy and light chains, respectively. SDS-PAGE analysis confirms the integrity and purity of the antibody.



Western blot analysis of JEG-3 cell lysate using Anti-Placental Alkaline Phosphatase Antibody [ALPP/2899R].