

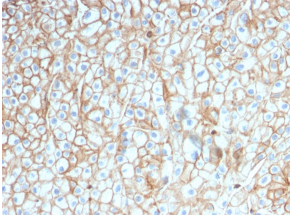
Anti-PD-L1 Antibody [PDL1/2746] - BSA and Azide free (A251953)

Specifications:

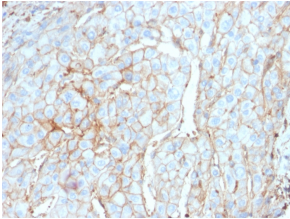
Name:	Anti-PD-L1 Antibody [PDL1/2746] - BSA and Azide free
Description:	Mouse monoclonal [PDL1/2746] antibody to PD-L1.
Applications:	ELISA, WB, Flow Cytometry, IF, IHC-P
Recommended Dilutions:	WB: 1-2 µg/ml, Flow Cytometry: 1-2 µg/million cells, IF: 1-2 µg/ml, IHC-P: 1-2 µg/ml
Reactivity:	Human, Mouse
Immunogen:	Recombinant fragment, around amino acids 39-191, of human PD-L1 protein. The exact sequence is proprietary.
Host:	Mouse
Clonality:	Monoclonal
Clone ID:	PDL1/2746
Isotype:	IgG2b
Light Chains:	kappa
Conjugate:	Unconjugated
Purification:	Protein A/G chromatography.
Concentration:	1 mg/ml
Product Form:	Liquid
Formulation:	Supplied in 10mM Phosphate Buffered Saline; without Sodium Azide and carrier free.
Storage:	Shipped at 4°C. Upon delivery aliquot and store at -20°C. Avoid freeze / thaw cycles.
General Notes:	This monoclonal antibody is also available in a different formulation with BSA and Sodium Azide - Anti-PD-L1 Antibody [PDL1/2746] (A248773).
Disclaimer:	This product is for research use only. It is not intended for diagnostic or therapeutic use.

Anti-PD-L1 Antibody [PDL1/2746] - BSA and Azide free (A251953)

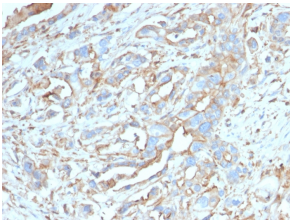
Images:



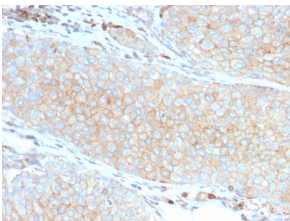
Immunohistochemical analysis of formalin-fixed, paraffin-embedded human lung squamous cell carcinoma using Anti-PD-L1 Antibody [PDL1/2746].



Immunohistochemical analysis of formalin-fixed, paraffin-embedded human cervical carcinoma using Anti-PD-L1 Antibody [PDL1/2746].



Immunohistochemical analysis of formalin-fixed, paraffin-embedded human breast carcinoma using Anti-PD-L1 Antibody [PDL1/2746].



Immunohistochemical analysis of formalin-fixed, paraffin-embedded human basal cell carcinoma using Anti-PD-L1 Antibody [PDL1/2746].