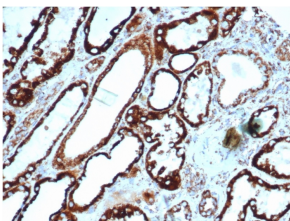


## Anti-HSP60 Antibody [rHSPD1/6495] - BSA and Azide free (A252062)

### Specifications:

|                        |                                                                                                                                                |
|------------------------|------------------------------------------------------------------------------------------------------------------------------------------------|
| Name:                  | Anti-HSP60 Antibody [rHSPD1/6495] - BSA and Azide free                                                                                         |
| Description:           | Recombinant mouse monoclonal [rHSPD1/6495] antibody to HSP60.                                                                                  |
| Applications:          | WB, IHC-P                                                                                                                                      |
| Recommended Dilutions: | WB: 1-2 µg/ml, IHC-P: 1-2 µg/ml                                                                                                                |
| Reactivity:            | Human, Monkey, Mouse, Rat, Hamster, Guinea Pig, Chicken                                                                                        |
| Immunogen:             | Recombinant full-length human HSPD1 protein.                                                                                                   |
| Host:                  | Mouse                                                                                                                                          |
| Clonality:             | Monoclonal                                                                                                                                     |
| Clone ID:              | rHSPD1/6495                                                                                                                                    |
| Isotype:               | IgG2a                                                                                                                                          |
| Light Chains:          | kappa                                                                                                                                          |
| Conjugate:             | Unconjugated                                                                                                                                   |
| Purification:          | Protein A/G chromatography.                                                                                                                    |
| Concentration:         | 1 mg/ml                                                                                                                                        |
| Product Form:          | Liquid                                                                                                                                         |
| Formulation:           | Supplied in 10mM Phosphate Buffered Saline; without Sodium Azide and carrier free.                                                             |
| Storage:               | Shipped at 4°C. Upon delivery aliquot and store at -20°C. Avoid freeze / thaw cycles.                                                          |
| General Notes:         | This monoclonal antibody is also available in a different formulation with BSA and Sodium Azide - Anti-HSP60 Antibody [rHSPD1/6495] (A248882). |
| Disclaimer:            | This product is for research use only. It is not intended for diagnostic or therapeutic use.                                                   |

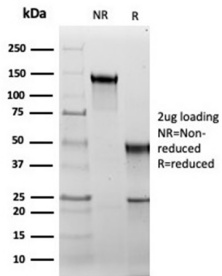
### Images:



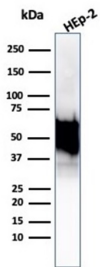
Immunohistochemical analysis of formalin-fixed, paraffin-embedded human thyroid using Anti-HSP60 Antibody [rHSPD1/6495].

## Anti-HSP60 Antibody [rHSPD1/6495] - BSA and Azide free (A252062)

Images continued:



SDS-PAGE analysis of Anti-HSP60 Antibody [rHSPD1/6495] under non-reduced and reduced conditions; showing intact IgG and intact heavy and light chains, respectively. SDS-PAGE analysis confirms the integrity and purity of the antibody.



Western blot analysis of Hep2 cell lysate using Anti-HSP60 Antibody [rHSPD1/6495].