

## Anti-HSP60 Antibody [LK2] - BSA and Azide free (A252065)

### Specifications:

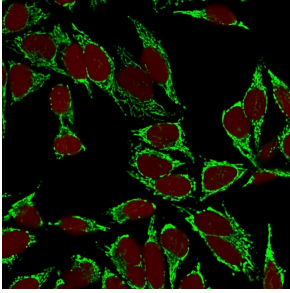
|                        |  |
|------------------------|--|
| Name:                  | Anti-HSP60 Antibody [LK2] - BSA and Azide free   |
| Description:           | Mouse monoclonal [LK2] antibody to HSP60.  |
| Specificity:           | This antibody recognizes a 60kDa protein, identified as the heat shock protein 60 (hsp60). Its epitope is localized between aa 383-419 of human hsp60. A wide variety of environmental and pathophysiological stressful conditions trigger the synthesis of a family of proteins known as heat shock proteins (hsp s), more appropriately called as stress response proteins (srp s). hsp60 is a potential antigen in a number of autoimmune diseases. In human arthritis and in experimentally induced arthritis in animals, disease development coincides with the development of immune reactivity directed against not only bacterial hsp60, but also against its mammalian homolog. |
| Applications:          | IF, WB, IHC-P  |
| Recommended Dilutions: | IF: 1-2 µg/ml, WB: 1-2 µg/ml, IHC-P: 1-2 µg/ml   |
| Reactivity:            | Human, Monkey, Mouse, Rat, Hamster, Guinea Pig, Chicken, E. coli, Borellia, Streptococcus pyogenes, Yersinia enterocolitica, Salmonella typhimurium, Treponema hyodysenteriae, Treponema innocense, Trichinella spiralis, Helminths, Yeast, Spinach  |
| Immunogen:             | Recombinant human HSP60 protein.   |
| Host:                  | Mouse  |
| Clonality:             | Monoclonal   |
| Clone ID:              | LK2  |
| Isotype:               | IgG1   |
| Light Chains:          | kappa  |
| Conjugate:             | Unconjugated   |
| Purification:          | Protein A/G chromatography.  |
| Concentration:         | 1 mg/ml  |
| Product Form:          | Liquid   |
| Formulation:           | Supplied in 10mM Phosphate Buffered Saline; without Sodium Azide and carrier free.   |
| Storage:               | Shipped at 4°C. Upon delivery aliquot and store at -20°C. Avoid freeze / thaw cycles.  |
| General Notes:         | This monoclonal antibody is also available in a different formulation with BSA and Sodium Azide - Anti-HSP60 Antibody [LK2] (A248885).   |

# Anti-HSP60 Antibody [LK2] - BSA and Azide free (A252065)

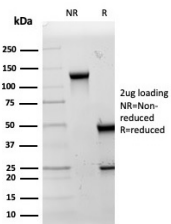
## Specifications continued:

**Disclaimer:** This product is for research use only. It is not intended for diagnostic or therapeutic use.

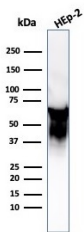
## Images:



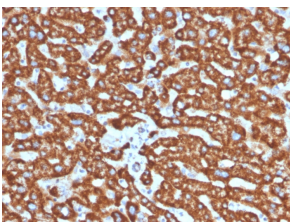
Immunofluorescent analysis of methanol fixed HeLa cells stained with Anti-HSP60 Antibody [LK2] followed by Goat Anti-Mouse IgG (CF® 488) (Green). Nuclei labeled with NucSpot (Red).



SDS-PAGE analysis of Anti-HSP60 Antibody [LK2] under non-reduced and reduced conditions; showing intact IgG and intact heavy and light chains, respectively. SDS-PAGE analysis confirms the integrity and purity of the antibody.



Western blot analysis of Hep2 cell lysate using Anti-HSP60 Antibody [LK2].



Immunohistochemical analysis of formalin-fixed, paraffin-embedded human liver in colon using Anti-HSP60 Antibody [LK2].