

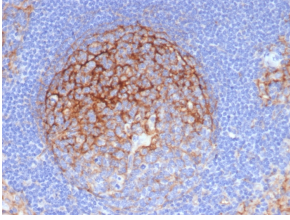
## Anti-ICAM1 Antibody [P2A4] - BSA and Azide free (A252085)

### Specifications:

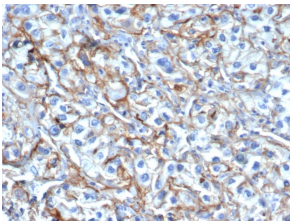
Name:	Anti-ICAM1 Antibody [P2A4] - BSA and Azide free
Description:	Mouse monoclonal [P2A4] antibody to ICAM1.
Specificity:	This antibody recognizes an 85-115kDa protein (variation with cell type), identified as intercellular adhesion molecule (ICAM-1). It has 7 potential N-linked glycosylation sites. ICAM-1 is a single chain glycoprotein of Ig supergene family, present on unstimulated endothelial cells (EC) and on a variety of other cell types including activated fibroblasts, EC, macrophages, and lymphocytes. ICAM-1 mediates cell adhesion by binding to integrins CD11a/CD18 (leukocyte adhesion molecule, LFA-1) and to CD11b/CD18 (Mac-1). This interaction enhances antigen-specific T-cell activation. ICAM-1 also binds to CD43 and to Plasmodium falciparum infected RBCs. ICAM-1 may also be related to progression and metastasis of tumors.
Applications:	Functional Studies, Flow Cytometry, IF, IHC-P
Recommended Dilutions:	Flow Cytometry: 1-2 µg/million cells, IF: 1-2 µg/ml, IHC-P: 1-2 µg/ml
Reactivity:	Human
Immunogen:	Recombinant full-length human ICAM1 protein. Epitope is the extracellular domain.
Host:	Mouse
Clonality:	Monoclonal
Clone ID:	P2A4
Isotype:	IgG1
Conjugate:	Unconjugated
Purification:	Protein A/G chromatography.
Concentration:	1 mg/ml
Product Form:	Liquid
Formulation:	Supplied in 10mM Phosphate Buffered Saline; without Sodium Azide and carrier free.
Storage:	Shipped at 4°C. Upon delivery aliquot and store at -20°C. Avoid freeze / thaw cycles.
General Notes:	This monoclonal antibody is also available in a different formulation with BSA and Sodium Azide - Anti-ICAM1 Antibody [P2A4] (A248905).
Disclaimer:	This product is for research use only. It is not intended for diagnostic or therapeutic use.

## Anti-ICAM1 Antibody [P2A4] - BSA and Azide free (A252085)

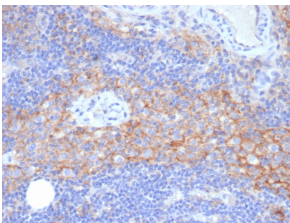
### Images:



Immunohistochemical analysis of formalin-fixed, paraffin-embedded human lymph node using Anti-ICAM1 Antibody [P2A4].



Immunohistochemical analysis of formalin-fixed, paraffin-embedded human renal cell carcinoma using Anti-ICAM1 Antibody [P2A4].



Immunohistochemical analysis of formalin-fixed, paraffin-embedded human lymph node using Anti-ICAM1 Antibody [P2A4].