

## Anti-Lambda Light Chain Antibody [LcN-2 + ICO-106] - BSA and Azide free (A252176)

### Specifications:

Name:	Anti-Lambda Light Chain Antibody [LcN-2 + ICO-106] - BSA and Azide free
Description:	Mouse monoclonal [LcN-2 + ICO-106] antibody to Lambda Light Chain.
Specificity:	This antibody is specific to lambda light chain of immunoglobulin and shows no cross-reaction with lambda light chain or any of the five heavy chains. In mammals, the two light chains in an antibody are always identical, with only one type of light chain, kappa or lambda. The ratio of Kappa to Lambda is 70:30. However, with the occurrence of multiple myeloma or other B-cell malignancies this ratio is disturbed. Antibody to the lambda light chain is reportedly useful in the identification of leukemias, plasmacytomas, and certain non-Hodgkins lymphomas. Demonstration of clonality in lymphoid infiltrates indicates that the infiltrate is malignant.
Applications:	Flow Cytometry, IF, WB
Recommended Dilutions:	Flow Cytometry: 1-2 µg/million cells, IF: 1-2 µg/ml, WB: 1-2 µg/ml
Reactivity:	Human
Immunogen:	Purified human IgG protein.
Host:	Mouse
Clonality:	Oligoclonal
Clone ID:	LcN-2 + ICO-106
Isotype:	IgG1, kappa + IgG2a, kappa
Conjugate:	Unconjugated
Purification:	Protein A/G chromatography.
Concentration:	1 mg/ml
Product Form:	Liquid
Formulation:	Supplied in 10mM Phosphate Buffered Saline; without Sodium Azide and carrier free.
Storage:	Shipped at 4°C. Upon delivery aliquot and store at -20°C. Avoid freeze / thaw cycles.

## Anti-Lambda Light Chain Antibody [LcN-2 + ICO-106] - BSA and Azide free (A252176)

### Specifications continued:

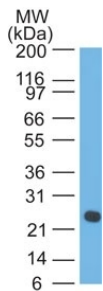
#### General Notes:

Please note, this product is an oligoclonal antibody; it is a cocktail of monoclonal antibodies that have been carefully selected. Oligoclonal antibodies not only have the specificity and batch-to-batch consistency of a monoclonal antibody, but they also have the advantage of the sensitivity of a polyclonal antibody due to their ability to recognize multiple epitopes on an antigen. This oligoclonal antibody is also available in a different formulation with BSA and Sodium Azide - Anti-Lambda Light Chain Antibody [LcN-2 + ICO-106] (A248996).

#### Disclaimer:

This product is for research use only. It is not intended for diagnostic or therapeutic use.

### Images:



Western blot analysis of human intestinal lysate using Anti-Lambda Light Chain Antibody [LcN-2 + ICO-106].