

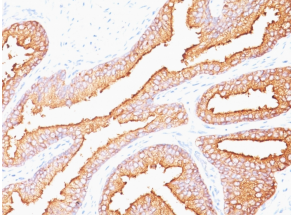
Anti-Prostate Specific Antigen Antibody [SPM352] - BSA and Azide free (A252183)

Specifications:

| | |
|------------------------|--|
| Name: | Anti-Prostate Specific Antigen Antibody [SPM352] - BSA and Azide free |
| Description: | Mouse monoclonal [SPM352] antibody to Prostate Specific Antigen. |
| Specificity: | This antibody recognizes a single protein of 33-34kDa, identified as the prostate specific antigen (PSA). This MAb is highly specific to PSA and stains prostatic secretory and ductal epithelium in both normal and neoplastic tissues. PSA is a chymotrypsin-like serine protease (kallikrein family) exclusively produced by the prostate epithelium, and abundant in seminal fluid. PSA can be detected in the sera of patients with prostatic carcinoma. It is predominantly complexed to a liver-derived serine protease inhibitor, alpha-1-antichymotrypsin (ACT). A higher proportion of serum PSA is complexed to ACT in prostate cancer than in benign prostate hyperplasia. |
| Applications: | Flow Cytometry, IF, IHC-P |
| Recommended Dilutions: | Flow Cytometry: 1-2 µg/million cells, IF: 1-2 µg/ml, IHC-P: 1-2 µg/ml |
| Reactivity: | Human |
| Immunogen: | Native PSA from human sperm plasma. |
| Host: | Mouse |
| Clonality: | Monoclonal |
| Clone ID: | SPM352 |
| Isotype: | IgG1 |
| Light Chains: | kappa |
| Conjugate: | Unconjugated |
| Purification: | Protein A/G chromatography. |
| Concentration: | 1 mg/ml |
| Product Form: | Liquid |
| Formulation: | Supplied in 10mM Phosphate Buffered Saline; without Sodium Azide and carrier free. |
| Storage: | Shipped at 4°C. Upon delivery aliquot and store at -20°C. Avoid freeze / thaw cycles. |
| General Notes: | This monoclonal antibody is also available in a different formulation with BSA and Sodium Azide - Anti-Prostate Specific Antigen Antibody [SPM352] (A249003). |
| Disclaimer: | This product is for research use only. It is not intended for diagnostic or therapeutic use. |

Anti-Prostate Specific Antigen Antibody [SPM352] - BSA and Azide free (A252183)

Images:



Immunohistochemical analysis of formalin-fixed, paraffin-embedded human prostate carcinoma using Anti-Prostate Specific Antigen Antibody [SPM352].