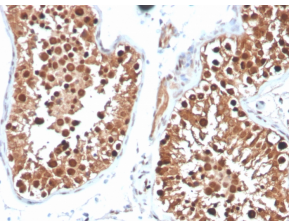


## Anti-Inhibin alpha Antibody [INHA/4265] - BSA and Azide free (A252213)

### Specifications:

Name:	Anti-Inhibin alpha Antibody [INHA/4265] - BSA and Azide free
Description:	Mouse monoclonal [INHA/4265] antibody to Inhibin alpha.
Applications:	IHC-P
Recommended Dilutions:	IHC-P: 1-2 µg/ml
Reactivity:	Human
Immunogen:	Synthetic peptide, within amino acids 73-96, of alpha-subunit of human Inhibin A protein. The exact sequence is proprietary.
Host:	Mouse
Clonality:	Monoclonal
Clone ID:	INHA/4265
Isotype:	IgG2a
Conjugate:	Unconjugated
Purification:	Protein A/G chromatography.
Concentration:	1 mg/ml
Product Form:	Liquid
Formulation:	Supplied in 10mM Phosphate Buffered Saline; without Sodium Azide and carrier free.
Storage:	Shipped at 4°C. Upon delivery aliquot and store at -20°C. Avoid freeze / thaw cycles.
General Notes:	This monoclonal antibody is also available in a different formulation with BSA and Sodium Azide - Anti-Inhibin alpha Antibody [INHA/4265] (A249033).
Disclaimer:	This product is for research use only. It is not intended for diagnostic or therapeutic use.

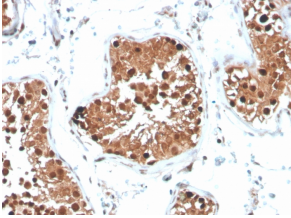
### Images:



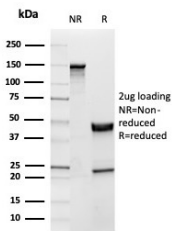
Immunohistochemical analysis of formalin-fixed, paraffin-embedded human testis using Anti-Inhibin alpha Antibody [INHA/4265].

## Anti-Inhibin alpha Antibody [INHA/4265] - BSA and Azide free (A252213)

Images continued:



Immunohistochemical analysis of formalin-fixed, paraffin-embedded human testis using Anti-Inhibin alpha Antibody [INHA/4265].



SDS-PAGE analysis of Anti-Inhibin alpha Antibody [INHA/4265] under non-reduced and reduced conditions; showing intact IgG and intact heavy and light chains, respectively. SDS-PAGE analysis confirms the integrity and purity of the antibody.