

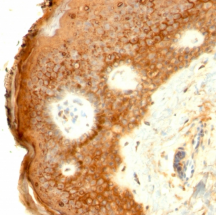
Anti-Involucrin Antibody [SPM259] - BSA and Azide free (A252269)

Specifications:

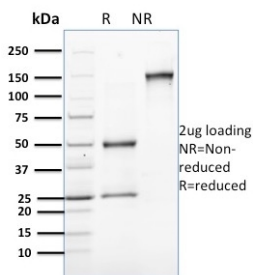
Name:	Anti-Involucrin Antibody [SPM259] - BSA and Azide free
Description:	Mouse monoclonal [SPM259] antibody to Involucrin.
Specificity:	The epitope of this antibody is between amino acids 421-568 of human involucrin. It stains involucrin in a variety of sizes (66-170 kDa): 120 kDa in human keratinocytes, 170 kDa in MCF-7 cells, a doublet of ~115 kDa and 150 kDa in gorilla / owl monkey, and 66 kDa in dog.
Applications:	Flow Cytometry, IF, IHC-P
Recommended Dilutions:	Flow Cytometry: 1-2 µg/million cells, IF: 1-2 µg/ml, IHC-P: 1-2 µg/ml
Reactivity:	Human, Gorilla, Owl Monkey, Porcine, Canine
Cross Reactivity:	This antibody does not cross react with Mouse.
Immunogen:	Purified involucrin from human keratinocytes.
Host:	Mouse
Clonality:	Monoclonal
Clone ID:	SPM259
Isotype:	IgG1
Light Chains:	kappa
Conjugate:	Unconjugated
Purification:	Protein A/G chromatography.
Concentration:	1 mg/ml
Product Form:	Liquid
Formulation:	Supplied in 10mM Phosphate Buffered Saline; without Sodium Azide and carrier free.
Storage:	Shipped at 4°C. Upon delivery aliquot and store at -20°C. Avoid freeze / thaw cycles.
General Notes:	This monoclonal antibody is also available in a different formulation with BSA and Sodium Azide - Anti-Involucrin Antibody [SPM259] (A249089).
Disclaimer:	This product is for research use only. It is not intended for diagnostic or therapeutic use.

Anti-Involucrin Antibody [SPM259] - BSA and Azide free (A252269)

Images:



Immunohistochemical analysis of formalin-fixed, paraffin-embedded human skin using Anti-Involucrin Antibody [SPM259].



SDS-PAGE analysis of Anti-Involucrin Antibody [SPM259] under non-reduced and reduced conditions; showing intact IgG and intact heavy and light chains, respectively. SDS-PAGE analysis confirms the integrity and purity of the antibody.