

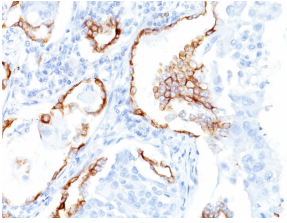
## Anti-Cytokeratin 7 Antibody [K72.7] - BSA and Azide free (A252317)

### Specifications:

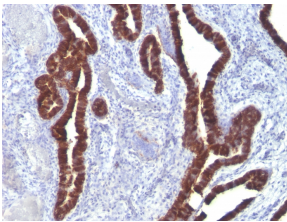
Name:	Anti-Cytokeratin 7 Antibody [K72.7] - BSA and Azide free
Description:	Mouse monoclonal [K72.7] antibody to Cytokeratin 7.
Specificity:	This antibody is highly specific to Cytokeratin 7 and shows no cross-reaction with other intermediate filament proteins.
Applications:	Flow Cytometry, IF, WB, IHC-P
Recommended Dilutions:	Flow Cytometry: 1-2 µg/million cells, IF: 1-2 µg/ml, WB: 1-2 µg/ml, IHC-P: 1-2 µg/ml
Reactivity:	Human
Immunogen:	Semi-purified cytokeratin preparation.
Host:	Mouse
Clonality:	Monoclonal
Clone ID:	K72.7
Isotype:	IgG1
Light Chains:	kappa
Conjugate:	Unconjugated
Purification:	Protein A/G chromatography.
Concentration:	1 mg/ml
Product Form:	Liquid
Formulation:	Supplied in 10mM Phosphate Buffered Saline; without Sodium Azide and carrier free.
Storage:	Shipped at 4°C. Upon delivery aliquot and store at -20°C. Avoid freeze / thaw cycles.
General Notes:	This monoclonal antibody is also available in a different formulation with BSA and Sodium Azide - Anti-Cytokeratin 7 Antibody [K72.7] (A249137).
Disclaimer:	This product is for research use only. It is not intended for diagnostic or therapeutic use.

## Anti-Cytokeratin 7 Antibody [K72.7] - BSA and Azide free (A252317)

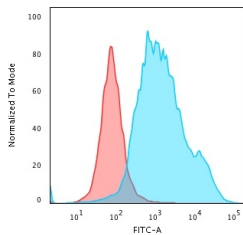
### Images:



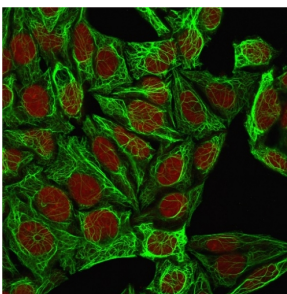
Immunohistochemical analysis of formalin-fixed, paraffin-embedded human lung squamous cell carcinoma using Anti-Cytokeratin 7 Antibody [K72.7].



Immunohistochemical analysis of formalin-fixed, paraffin-embedded ovarian carcinoma using Anti-Cytokeratin 7 Antibody [K72.7].



Flow cytometric analysis of PFA fixed HeLa cells using Anti-Cytokeratin 7 Antibody [K72.7] followed by Goat Anti-Mouse IgG (CF® 488) (Blue). Isotype Control (Red).



Immunofluorescent analysis of methanol fixed HeLa cells stained with Anti-Cytokeratin 7 Antibody [K72.7] followed by Goat Anti-Mouse IgG (CF® 488) (Green). The nuclear counterstain is RedDot (Red).