

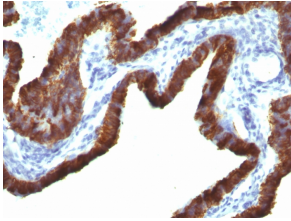
Anti-Cytokeratin 7 Antibody [KRT7/760 + OV-TL12/30] - BSA and Azide free (A252321)

Specifications:

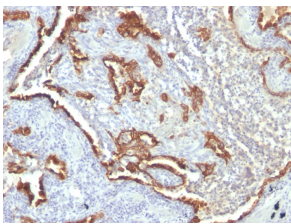
Name:	Anti-Cytokeratin 7 Antibody [KRT7/760 + OV-TL12/30] - BSA and Azide free
Description:	Mouse monoclonal [KRT7/760 + OV-TL12/30] antibody to Cytokeratin 7.
Specificity:	This antibody is highly specific to Cytokeratin 7 and shows no cross-reaction with other intermediate filament proteins.
Applications:	Flow Cytometry, IF, IHC-P
Recommended Dilutions:	Flow Cytometry: 1-2 µg/million cells, IF: 1-2 µg/ml, IHC-P: 1-2 µg/ml
Reactivity:	Human, Rat
Immunogen:	Clone KRT7/760: Recombinant full-length human KRT7 protein. Clone OV-TL12/30: OTN 11, ovarian carcinoma cell line.
Host:	Mouse
Clonality:	Oligoclonal
Clone ID:	KRT7/760 + OV-TL12/30
Isotype:	IgG1, kappa + IgG1, kappa
Conjugate:	Unconjugated
Purification:	Protein A/G chromatography.
Concentration:	1 mg/ml
Product Form:	Liquid
Formulation:	Supplied in 10mM Phosphate Buffered Saline; without Sodium Azide and carrier free.
Storage:	Shipped at 4°C. Upon delivery aliquot and store at -20°C. Avoid freeze / thaw cycles.
General Notes:	Please note, this product is an oligoclonal antibody; it is a cocktail of monoclonal antibodies that have been carefully selected. Oligoclonal antibodies not only have the specificity and batch-to-batch consistency of a monoclonal antibody, but they also have the advantage of the sensitivity of a polyclonal antibody due to their ability to recognize multiple epitopes on an antigen. This oligoclonal antibody is also available in a different formulation with BSA and Sodium Azide - Anti-Cytokeratin 7 Antibody [KRT7/760 + OV-TL12/30] (A249141).
Disclaimer:	This product is for research use only. It is not intended for diagnostic or therapeutic use.

Anti-Cytokeratin 7 Antibody [KRT7/760 + OV-TL12/30] - BSA and Azide free (A252321)

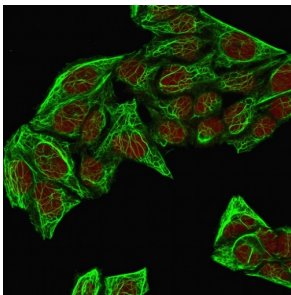
Images:



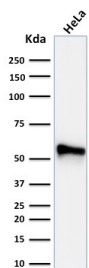
Immunohistochemical analysis of formalin-fixed, paraffin-embedded human ovarian carcinoma using Anti-Cytokeratin 7 Antibody [KRT7/760 + OV-TL12/30].



Immunohistochemical analysis of formalin-fixed, paraffin-embedded human lung carcinoma using Anti-Cytokeratin 7 Antibody [KRT7/760 + OV-TL12/30].



Immunofluorescent analysis of methanol fixed HeLa cells stained with Anti-Cytokeratin 7 Antibody [KRT7/760 + OV-TL12/30] followed by Goat Anti-Mouse IgG (CF® 488) (Green). The nuclear counterstain is RedDot.



Western blot analysis of human HeLa cell lysate using Anti-Cytokeratin 7 Antibody [KRT7/760 + OV-TL12/30].