

Anti-Cytokeratin 19 Antibody [KRT19/800] - BSA and Azide free (A252394)

Specifications:

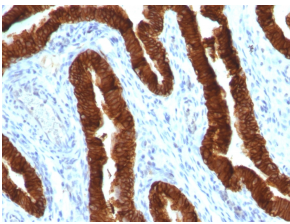
Name:	Anti-Cytokeratin 19 Antibody [KRT19/800] - BSA and Azide free
Description:	Mouse monoclonal [KRT19/800] antibody to Cytokeratin 19.
Specificity:	This antibody recognizes a protein of 40kDa, identified as cytokeratin-19 (CK19), which is expressed in sweat gland, mammary gland ductal and secretory cells, bile ducts, gastrointestinal tract, bladder urothelium, oral epithelia, esophagus, and ectocervical epithelium. Anti-CK19 reacts with a wide variety of epithelial malignancies including adenocarcinomas of the colon, stomach, pancreas, biliary tract, liver, and breast. Perhaps the most useful application is the identification of thyroid carcinoma of the papillary type, although 50%-60% of follicular carcinomas are also labeled. Anti-CK19 is a useful marker for detection of tumor cells in lymph nodes, peripheral blood, bone marrow and breast cancer.
Applications:	Flow Cytometry, IF, WB, IHC-P
Recommended Dilutions:	Flow Cytometry: 0.5-1 µg/million cells, IF: 1-2 µg/ml, WB: 1-2 µg/ml, IHC-P: 1-2 µg/ml
Reactivity:	Human, Mouse, Rat
Immunogen:	Recombinant full-length human KRT19 protein.
Host:	Mouse
Clonality:	Monoclonal
Clone ID:	KRT19/800
Isotype:	IgG1
Light Chains:	kappa
Conjugate:	Unconjugated
Purification:	Protein A/G chromatography.
Concentration:	1 mg/ml
Product Form:	Liquid
Formulation:	Supplied in 10mM Phosphate Buffered Saline; without Sodium Azide and carrier free.
Storage:	Shipped at 4°C. Upon delivery aliquot and store at -20°C. Avoid freeze / thaw cycles.
General Notes:	This monoclonal antibody is also available in a different formulation with BSA and Sodium Azide - Anti-Cytokeratin 19 Antibody [KRT19/800] (A249214).

Anti-Cytokeratin 19 Antibody [KRT19/800] - BSA and Azide free (A252394)

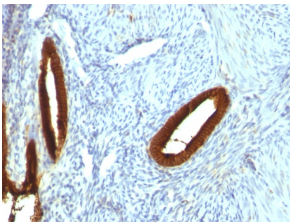
Specifications continued:

Disclaimer: This product is for research use only. It is not intended for diagnostic or therapeutic use.

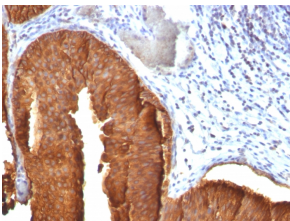
Images:



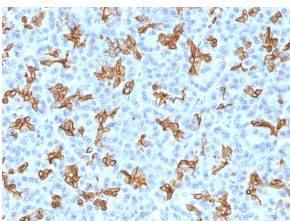
Immunohistochemical analysis of formalin-fixed, paraffin-embedded human ovarian carcinoma using Anti-Cytokeratin 19 Antibody [KRT19/800].



Immunohistochemical analysis of formalin-fixed, paraffin-embedded human endometrial carcinoma using Anti-Cytokeratin 19 Antibody [KRT19/800].



Immunohistochemical analysis of formalin-fixed, paraffin-embedded human bladder carcinoma using Anti-Cytokeratin 19 Antibody [KRT19/800].



Immunohistochemical analysis of formalin-fixed, paraffin-embedded human pancreas using Anti-Cytokeratin 19 Antibody [KRT19/800].