

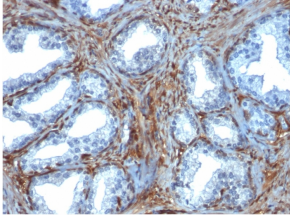
Anti-Galectin 1 Antibody [GAL1/1831] - BSA and Azide free (A252406)

Specifications:

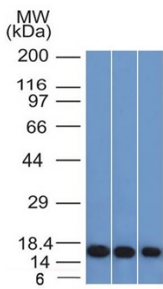
Name:	Anti-Galectin 1 Antibody [GAL1/1831] - BSA and Azide free
Description:	Mouse monoclonal [GAL1/1831] antibody to Galectin 1.
Applications:	WB, ELISA, IF, IHC-P
Recommended Dilutions:	WB: 1-2 µg/ml, IF: 1-2 µg/ml, WB: 1-2 µg/ml, IHC-P: 1-2 µg/ml
Reactivity:	Human
Immunogen:	Recombinant fragment, around amino acids 12-108, of human Galectin 1 protein. The exact sequence is proprietary.
Host:	Mouse
Clonality:	Monoclonal
Clone ID:	GAL1/1831
Isotype:	IgG2
Light Chains:	lambda
Conjugate:	Unconjugated
Purification:	Protein A/G chromatography.
Concentration:	1 mg/ml
Product Form:	Liquid
Formulation:	Supplied in 10mM Phosphate Buffered Saline; without Sodium Azide and carrier free.
Storage:	Shipped at 4°C. Upon delivery aliquot and store at -20°C. Avoid freeze / thaw cycles.
General Notes:	This monoclonal antibody is also available in a different formulation with BSA and Sodium Azide - Anti-Galectin 1 Antibody [GAL1/1831] (A249226).
Disclaimer:	This product is for research use only. It is not intended for diagnostic or therapeutic use.

Anti-Galectin 1 Antibody [GAL1/1831] - BSA and Azide free (A252406)

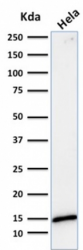
Images:



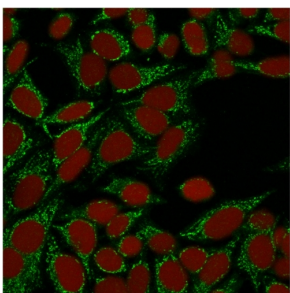
Immunohistochemical analysis of formalin-fixed, paraffin-embedded human prostate carcinoma using Anti-Galectin 1 Antibody [GAL1/1831].



Western blot analysis of HeLa, K562, and 293 cell lysates using Anti-Galectin 1 Antibody [GAL1/1831].



Western blot analysis of HeLa cell lysate using Anti-Galectin 1 Antibody [GAL1/1831].



Immunofluorescent analysis of HeLa cells stained with Anti-Galectin 1 Antibody [GAL1/1831] (CF® 488) (Green). Nuclear counterstain is RedDot.