

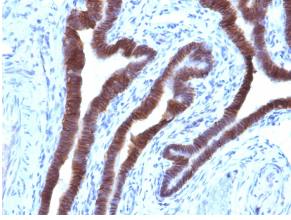
Anti-EpCAM Antibody [EGP40/1110] - BSA and Azide free (A252423)

Specifications:

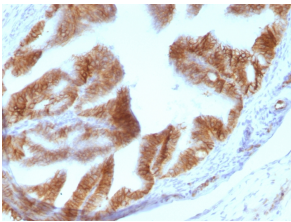
Name:	Anti-EpCAM Antibody [EGP40/1110] - BSA and Azide free
Description:	Mouse monoclonal [EGP40/1110] antibody to EpCAM.
Applications:	IHC-P
Recommended Dilutions:	IHC-P: 1-2 µg/ml
Reactivity:	Human, Mouse, Rat
Immunogen:	Recombinant fragment from the cytoplasmic domain, within amino acids 280-350, of human EpCAM. The exact sequence is proprietary.
Host:	Mouse
Clonality:	Monoclonal
Clone ID:	EGP40/1110
Isotype:	IgG2b
Light Chains:	kappa
Conjugate:	Unconjugated
Purification:	Protein A/G chromatography.
Concentration:	1 mg/ml
Product Form:	Liquid
Formulation:	Supplied in 10mM Phosphate Buffered Saline; without Sodium Azide and carrier free.
Storage:	Shipped at 4°C. Upon delivery aliquot and store at -20°C. Avoid freeze / thaw cycles.
General Notes:	This monoclonal antibody is also available in a different formulation with BSA and Sodium Azide - Anti-EpCAM Antibody [EGP40/1110] (A249243).
Disclaimer:	This product is for research use only. It is not intended for diagnostic or therapeutic use.

Anti-EpCAM Antibody [EGP40/1110] - BSA and Azide free (A252423)

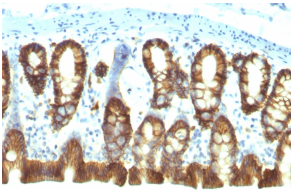
Images:



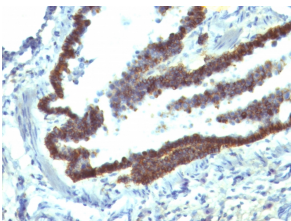
Immunohistochemical analysis of formalin-fixed, paraffin-embedded human ovarian carcinoma using Anti-EpCAM Antibody [EGP40/1110].



Immunohistochemical analysis of formalin-fixed, paraffin-embedded rat oviduct using Anti-EpCAM Antibody [EGP40/1110].



Immunohistochemical analysis of formalin-fixed, paraffin-embedded rat colon using Anti-EpCAM Antibody [EGP40/1110].



Immunohistochemical analysis of formalin-fixed, paraffin-embedded rat lung using Anti-EpCAM Antibody [EGP40/1110].