

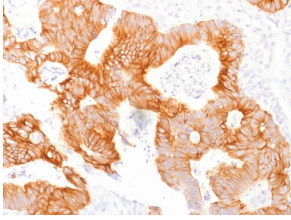
## Anti-EpCAM Antibody [EGP40/1798] - BSA and Azide free (A252429)

### Specifications:

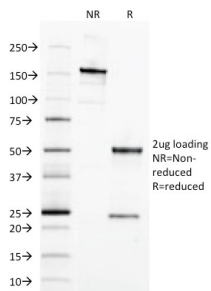
Name:	Anti-EpCAM Antibody [EGP40/1798] - BSA and Azide free
Description:	Mouse monoclonal [EGP40/1798] antibody to EpCAM.
Applications:	ELISA, Flow Cytometry, IF, IHC-P
Recommended Dilutions:	Flow Cytometry: 1-2 µg/million cells, IF: 1-2 µg/ml, IF: 1-2 µg/ml, IHC-P: 1-2 µg/ml
Reactivity:	Human
Immunogen:	Recombinant fragment, around amino acids 77-202, of human EpCAM protein. The exact sequence is proprietary.
Host:	Mouse
Clonality:	Monoclonal
Clone ID:	EGP40/1798
Isotype:	IgG2b
Light Chains:	kappa
Conjugate:	Unconjugated
Purification:	Protein A/G chromatography.
Concentration:	1 mg/ml
Product Form:	Liquid
Formulation:	Supplied in 10mM Phosphate Buffered Saline; without Sodium Azide and carrier free.
Storage:	Shipped at 4°C. Upon delivery aliquot and store at -20°C. Avoid freeze / thaw cycles.
General Notes:	This monoclonal antibody is also available in a different formulation with BSA and Sodium Azide - Anti-EpCAM Antibody [EGP40/1798] (A249249).
Disclaimer:	This product is for research use only. It is not intended for diagnostic or therapeutic use.

# Anti-EpCAM Antibody [EGP40/1798] - BSA and Azide free (A252429)

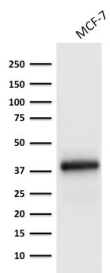
## Images:



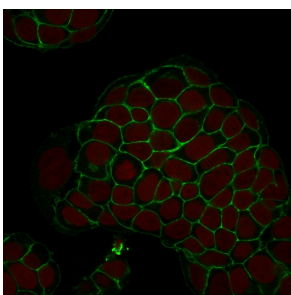
Immunohistochemical analysis of formalin-fixed, paraffin-embedded human colorectal carcinoma using Anti-EpCAM Antibody [EGP40/1798].



SDS-PAGE analysis of Anti-EpCAM Antibody [EGP40/1798] under non-reduced and reduced conditions; showing intact IgG and intact heavy and light chains, respectively. SDS-PAGE analysis confirms the integrity and purity of the antibody.



Western blot analysis of MCF-7 cell lysate using Anti-EpCAM Antibody [EGP40/1798].



Immunofluorescent analysis of MCF-7 cells stained with Anti-EpCAM Antibody [EGP40/1798] (CF® 488) (Green). Nuclear counterstain is RedDot.