

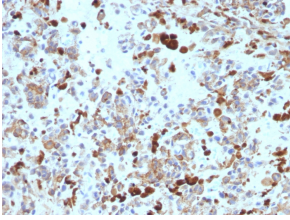
## Anti-MiTF Antibody [MITF/915] - BSA and Azide free (A252519)

### Specifications:

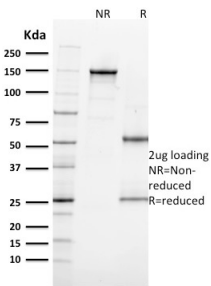
Name:	Anti-MiTF Antibody [MITF/915] - BSA and Azide free
Description:	Mouse monoclonal [MITF/915] antibody to MiTF.
Applications:	IHC-P
Recommended Dilutions:	IHC-P: 1-2 µg/ml
Reactivity:	Human, Canine
Cross Reactivity:	This antibody does not cross react with Mouse or Rat.
Immunogen:	Recombinant full-length human MiTF protein.
Host:	Mouse
Clonality:	Monoclonal
Clone ID:	MITF/915
Isotype:	IgG1
Light Chains:	kappa
Conjugate:	Unconjugated
Purification:	Protein A/G chromatography.
Concentration:	1 mg/ml
Product Form:	Liquid
Formulation:	Supplied in 10mM Phosphate Buffered Saline; without Sodium Azide and carrier free.
Storage:	Shipped at 4°C. Upon delivery aliquot and store at -20°C. Avoid freeze / thaw cycles.
General Notes:	This monoclonal antibody is also available in a different formulation with BSA and Sodium Azide - Anti-MiTF Antibody [MITF/915] (A249339).
Disclaimer:	This product is for research use only. It is not intended for diagnostic or therapeutic use.

## Anti-MiTF Antibody [MITF/915] - BSA and Azide free (A252519)

### Images:



Immunohistochemical analysis of formalin-fixed, paraffin-embedded human melanoma using Anti-MiTF Antibody [MITF/915].



SDS-PAGE analysis of Anti-MiTF Antibody [MITF/915] under non-reduced and reduced conditions; showing intact IgG and intact heavy and light chains, respectively. SDS-PAGE analysis confirms the integrity and purity of the antibody.