

Anti-MUC1 Antibody [rMUC1/960] - BSA and Azide free (A252577)

Specifications:

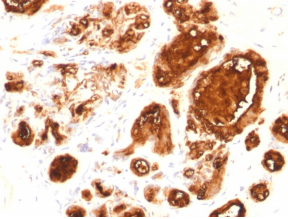
Name:	Anti-MUC1 Antibody [rMUC1/960] - BSA and Azide free
Description:	Recombinant mouse monoclonal [rMUC1/960] antibody to MUC1.
Specificity:	This antibody reacts with MUC1, a large transmembrane glycoprotein expressed on the ductal surface of normal glandular epithelia. The dominant epitope of This antibody involves both amino acids as well as sugar moieties. Neuraminidase treatment destroys the antigen. It is a very good tracer agent in CA15.3 assays. The extracellular domain of MUC1 largely consists of a highly conserved, O-glycosylated 20 amino acids tandem repeat which can occur 30-100 times per molecule depending on the length of the allele involved. In the vast majority of human carcinomas this protein is up-regulated and poorly glycosylated and appears on the cell surface in a non-polarized fashion.
Applications:	Flow Cytometry, IF, WB, IHC
Recommended Dilutions:	Flow Cytometry: 0.5-1 µg/million cells, IF: 1-2 µg/ml, WB: 1-2 µg/ml, IHC: 0.5-1 µg/ml
Reactivity:	Human
Immunogen:	Recombinant human MUC1 protein.
Host:	Mouse
Clonality:	Monoclonal
Clone ID:	rMUC1/960
Isotype:	IgG2b
Light Chains:	kappa
Conjugate:	Unconjugated
Purification:	Protein A/G chromatography.
Concentration:	1 mg/ml
Product Form:	Liquid
Formulation:	Supplied in 10mM Phosphate Buffered Saline; without Sodium Azide and carrier free.
Storage:	Shipped at 4°C. Upon delivery aliquot and store at -20°C. Avoid freeze / thaw cycles.
General Notes:	This monoclonal antibody is also available in a different formulation with BSA and Sodium Azide - Anti-MUC1 Antibody [rMUC1/960] (A249397).

Anti-MUC1 Antibody [rMUC1/960] - BSA and Azide free (A252577)

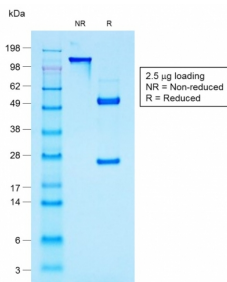
Specifications continued:

Disclaimer: This product is for research use only. It is not intended for diagnostic or therapeutic use.

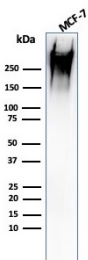
Images:



Immunohistochemical analysis of formalin-fixed, paraffin-embedded human breast carcinoma using Anti-MUC1 Antibody [rMUC1/960].



SDS-PAGE analysis of Anti-MUC1 Antibody [rMUC1/960] under non-reduced and reduced conditions; showing intact IgG and intact heavy and light chains, respectively. SDS-PAGE analysis confirms the integrity and purity of the antibody.



Western blot analysis of human MCF-7 cell lysate using Anti-MUC1 Antibody [rMUC1/960].