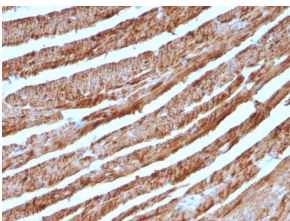


## Anti-Cytochrome C Antibody [CTC05] - BSA and Azide free (A252825)

### Specifications:

Name:	Anti-Cytochrome C Antibody [CTC05] - BSA and Azide free
Description:	Mouse monoclonal [CTC05] antibody to Cytochrome C.
Applications:	WB, Flow Cytometry, IHC-P
Recommended Dilutions:	WB: 1-2 µg/ml, Flow Cytometry: 1-2 µg/million cells, IHC-P: 0.25-0.5 µg/ml
Reactivity:	Human, Mouse, Rat, Horse, Canine, Pigeon, Frog, Drosophila
Immunogen:	Recombinant Cytochrome c protein.
Host:	Mouse
Clonality:	Monoclonal
Clone ID:	CTC05
Isotype:	IgG2b
Light Chains:	kappa
Conjugate:	Unconjugated
Purification:	Protein A/G chromatography.
Concentration:	1 mg/ml
Product Form:	Liquid
Formulation:	Supplied in 10mM Phosphate Buffered Saline; without Sodium Azide and carrier free.
Storage:	Shipped at 4°C. Upon delivery aliquot and store at -20°C. Avoid freeze / thaw cycles.
General Notes:	This monoclonal antibody is also available in a different formulation with BSA and Sodium Azide - Anti-Cytochrome C Antibody [CTC05] (A249645).
Disclaimer:	This product is for research use only. It is not intended for diagnostic or therapeutic use.

### Images:



Immunohistochemical analysis of formalin-fixed, paraffin-embedded human heart using Anti-Cytochrome C Antibody [CTC05].