

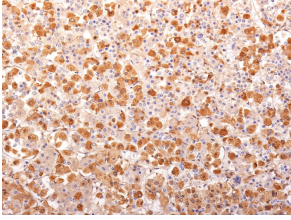
Anti-ACTH Antibody [AH26 + 57] - BSA and Azide free (A252841)

Specifications:

Name:	Anti-ACTH Antibody [AH26 + 57] - BSA and Azide free
Description:	Mouse monoclonal [AH26 + 57] antibody to ACTH.
Specificity:	This antibody is specific to Synacthen, amino acids 1-24 of ACTH, and it does not react with CLIP, amino acids 25-39 of ACTH.
Applications:	IHC-P
Recommended Dilutions:	IHC-P: 1-2 µg/ml
Reactivity:	Human, Mouse, Rat
Immunogen:	Clone AH26: Synthetic peptide corresponding to amino acids 1-24 of human ACTH protein. Clone 57: N terminal fragment of human ACTH protein, conjugated to KLH.
Host:	Mouse
Clonality:	Oligoclonal
Clone ID:	AH26 + 57
Isotype:	IgG1, kappa + IgG1, kappa
Conjugate:	Unconjugated
Purification:	Protein A/G chromatography.
Concentration:	1 mg/ml
Product Form:	Liquid
Formulation:	Supplied in 10mM Phosphate Buffered Saline; without Sodium Azide and carrier free.
Storage:	Shipped at 4°C. Upon delivery aliquot and store at -20°C. Avoid freeze / thaw cycles.
General Notes:	Please note, this product is an oligoclonal antibody; it is a cocktail of monoclonal antibodies that have been carefully selected. Oligoclonal antibodies not only have the specificity and batch-to-batch consistency of a monoclonal antibody, but they also have the advantage of the sensitivity of a polyclonal antibody due to their ability to recognize multiple epitopes on an antigen. This oligoclonal antibody is also available in a different formulation with BSA and Sodium Azide - Anti-ACTH Antibody [AH26 + 57] (A249661).
Disclaimer:	This product is for research use only. It is not intended for diagnostic or therapeutic use.

Anti-ACTH Antibody [AH26 + 57] - BSA and Azide free (A252841)

Images:



Immunohistochemical analysis of formalin-fixed, paraffin-embedded human pituitary gland using Anti-ACTH Antibody [AH26 + 57].