

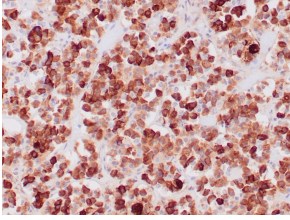
## Anti-ACTH Antibody [CLIP/1407] - BSA and Azide free (A252843)

### Specifications:

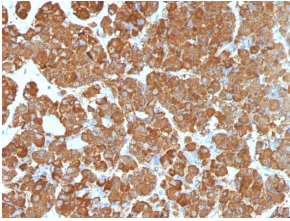
Name:	Anti-ACTH Antibody [CLIP/1407] - BSA and Azide free
Description:	Mouse monoclonal [CLIP/1407] antibody to ACTH.
Specificity:	This antibody is specific to CLIP, amino acids 25-39 of ACTH, and it does not react with Synacthen, amino acids 1-24 of ACTH.
Applications:	IHC-P
Recommended Dilutions:	IHC-P: 1-2 µg/ml
Reactivity:	Human
Immunogen:	Synthetic peptide corresponding to amino acids 25-39 of human ACTH protein.
Sequence:	NGAEDESAEAFPLEF
Host:	Mouse
Clonality:	Monoclonal
Clone ID:	CLIP/1407
Isotype:	IgG1
Light Chains:	kappa
Conjugate:	Unconjugated
Purification:	Protein A/G chromatography.
Concentration:	1 mg/ml
Product Form:	Liquid
Formulation:	Supplied in 10mM Phosphate Buffered Saline; without Sodium Azide and carrier free.
Storage:	Shipped at 4°C. Upon delivery aliquot and store at -20°C. Avoid freeze / thaw cycles.
General Notes:	This monoclonal antibody is also available in a different formulation with BSA and Sodium Azide - Anti-ACTH Antibody [CLIP/1407] (A249663).
Disclaimer:	This product is for research use only. It is not intended for diagnostic or therapeutic use.

## Anti-ACTH Antibody [CLIP/1407] - BSA and Azide free (A252843)

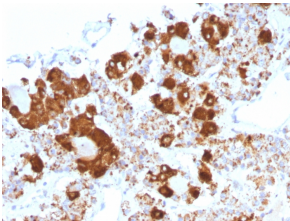
### Images:



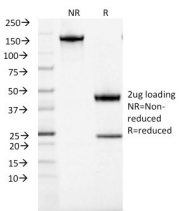
Immunohistochemical analysis of formalin-fixed, paraffin-embedded human pituitary adenoma using Anti-ACTH Antibody [CLIP/1407].



Immunohistochemical analysis of formalin-fixed, paraffin-embedded human pituitary gland using Anti-ACTH Antibody [CLIP/1407].



Immunohistochemical analysis of formalin-fixed, paraffin-embedded human pituitary using Anti-ACTH Antibody [CLIP/1407].



SDS-PAGE analysis of Anti-ACTH Antibody [CLIP/1407] under non-reduced and reduced conditions; showing intact IgG and intact heavy and light chains, respectively. SDS-PAGE analysis confirms the integrity and purity of the antibody.